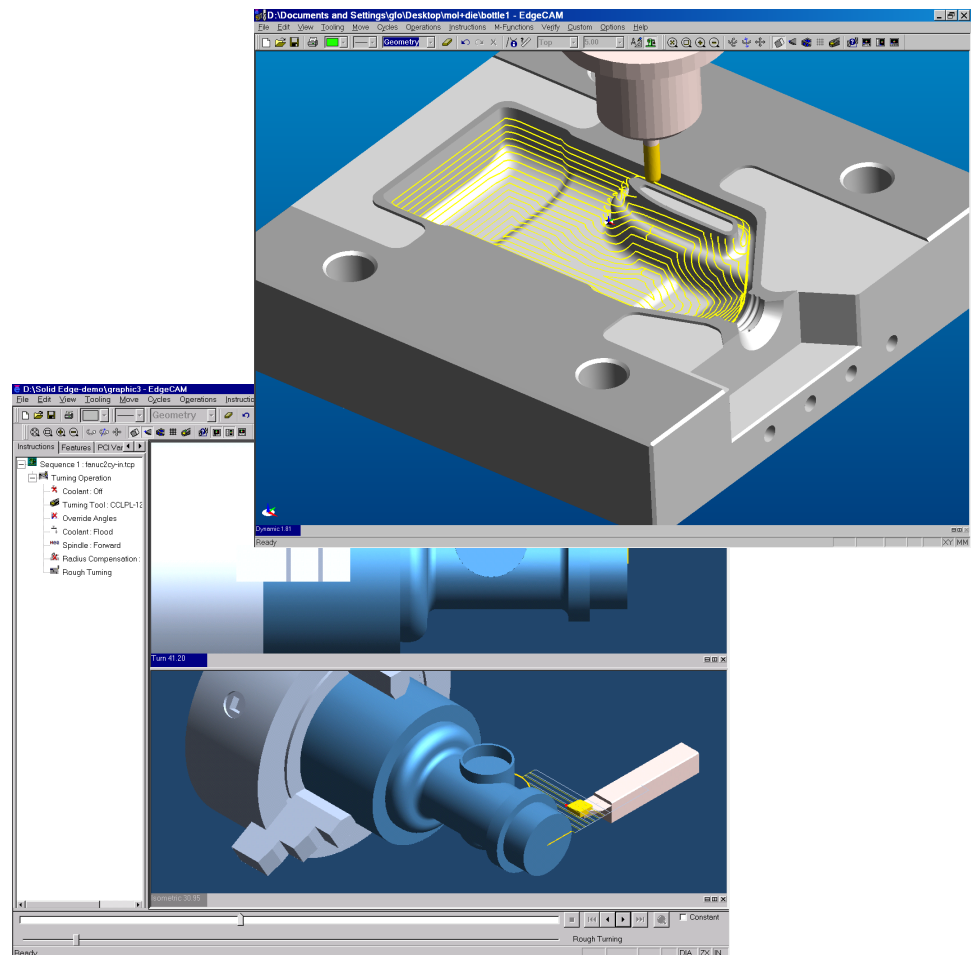


Computer Integrated Manufacturing  
 Video Conferencing  
 Virtual Reality  
 Technical support  
 edgeCAM SOFTWARE  
 CNC Software for Milling Machines  
 CNC Lathes



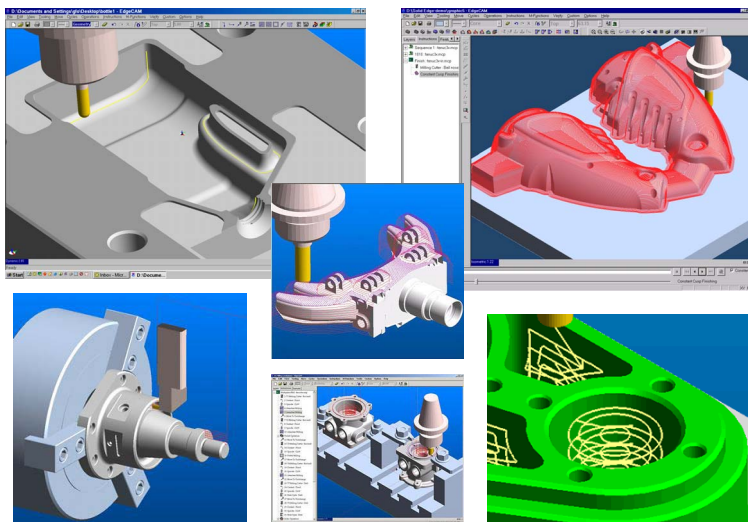
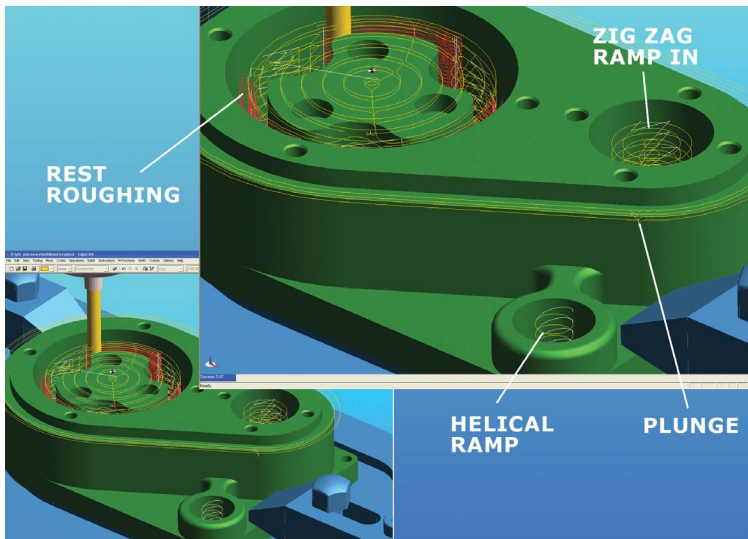
**edgeCAM®**  
 intelligent  
 manufacturing



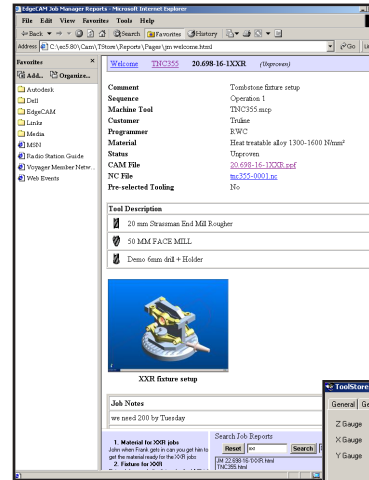
An affordable full industrial CAM package designed by Pathtrace. Offers intelligent manufacturing solutions for production milling, turning, and mold and die making.



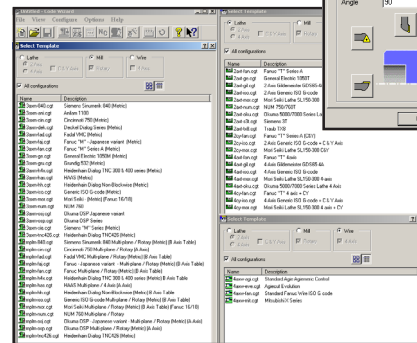
- EdgeCAM can accept native CAD files from all major CAD systems including Solidworks<sup>®</sup>, Solid Edge<sup>®</sup>, Autodesk Inventor<sup>®</sup>, CATIA<sup>®</sup>, and AutoCAD<sup>®</sup>.
- Import IGES, DXF, VDA, Parasolid, and ACIS files.
- 2D and 3D CAD functionality to draw components from concept to completion, or allows modification of imported files.
- EdgeCAM Code Wizard produces NC code for any type of CNC machine tool.



EdgeCAM does much more than generate NC code. Using the Productivity Toolbox, EdgeCAM develops machining strategies that optimizes toolpaths, eliminate air cutting, maximizes tool life, reduces programming time, and increases overall productivity.



The Job Manager stores valuable data for a job such as tool lists, job status, customer details, etc.



The ToolStore allows tools to be added, removed, edited, and finally selected for use within EdgeCAM.

The Code Wizard creates instant code generators that allow NC code to be produced for any machine tool.

Minimum Requirements for EdgeCAM are:

- Windows 2000 (service pack 2 and above) or Windows XP
- Current Intel Pentium compatible processor i.e. Pentium 4 or AMD Athlon
- 512 Mb RAM minimum (1Gb for advanced systems)
- 1Gb free disk space (including allowance for page file)
- Graphics Card capable of 1024 x 768 high color setting & 32Mb memory \*
- 17" color monitor (minimum screen resolution of 1024 x 768)
- Mouse including wheel (Intellimouse)
- CD-ROM drive
- Internet Explorer 4 or above
- Parallel Port for security key (not required for EdgeCAM Part Modeler)

The recommended hardware specifications provide a guide when purchasing a new PC. EdgeCAM will perform acceptably on PCs with a lower specification processor i.e. Pentium 3, 800Mhz provided the other requirements (above) are included.

\* For the latest information on recommended graphics cards please refer to the Support page of the Pathtrace web site ([www.pathtrace.com](http://www.pathtrace.com))



MasterCard, VISA, and American Express accepted

**Total Commitment to Manufacturing Technology in Education, Training, and Prototyping Worldwide**

Denford Inc. • 815 West Liberty Street, Medina, Ohio 44256 • 1-800-886-9750 • Fax: 330-725-3297  
Denford Limited • Birds Royd, Brighouse, West Yorkshire, HD6 1NB, England • +44 (0) 1484 712264  
[www.denford.com](http://www.denford.com) • [sales@denford.com](mailto:sales@denford.com)

All brands & products are trademarks or registered trademarks of their rightful owners.  
Specifications subject to change without notice. July 2003 • 3rd Edition