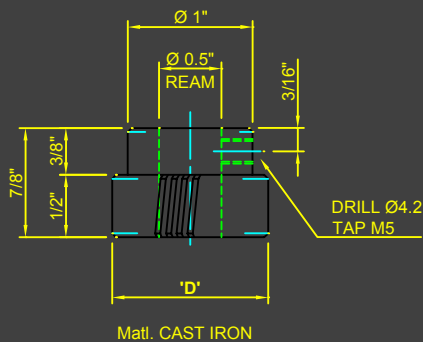
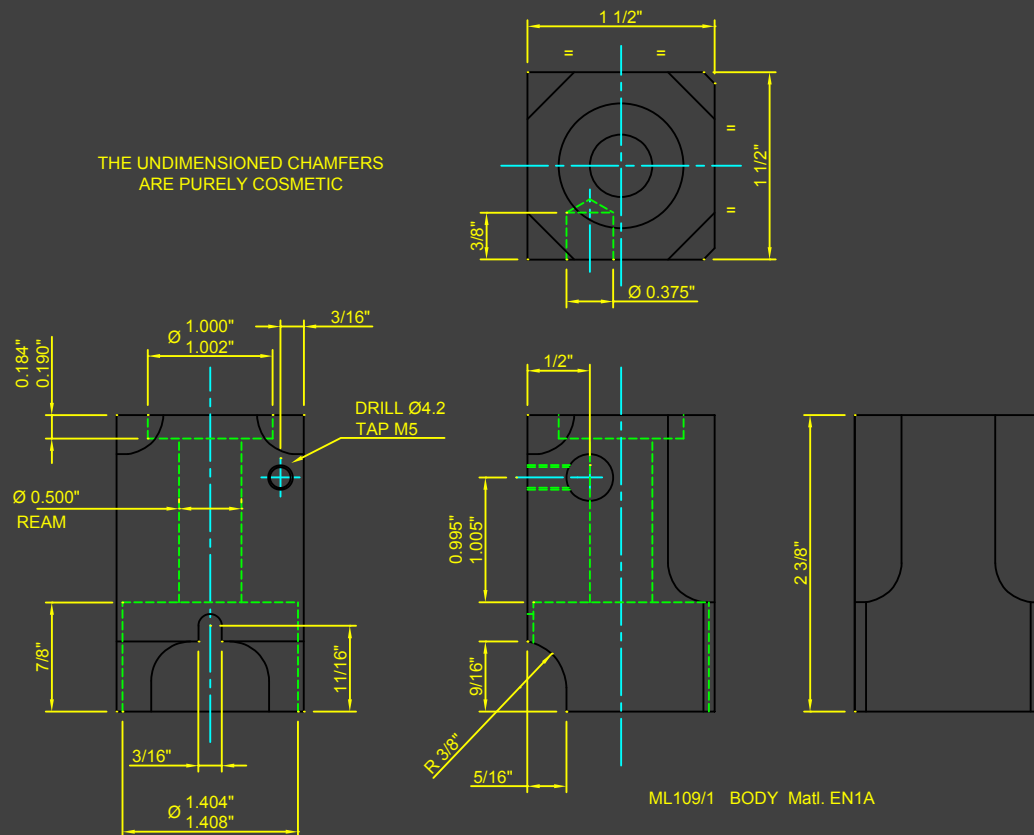
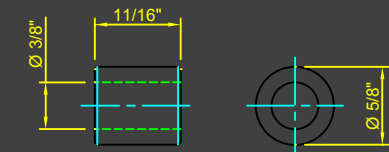
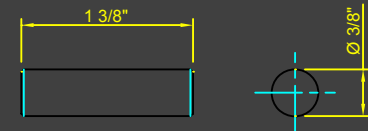


THE UNDIMENSIONED CHAMFERS
ARE PURELY COSMETIC



	GEAR DATA		
	ML109/3	ML109/7	ML109/8
No.OF TEETH	32	28	30
D.P.	24	26	26
P.C.D.	1.2732"	1.0784"	1.1555"
HELIX ANGLE	3° 19'	3° 6'	3° 6'
PRESS ANGLE	14.5°	14.5°	14.5°
ADDENDUM	0.0417"	0.0384"	0.0384"
TOOTH DEPTH	0.0898"	0.0829"	0.0829"
Ø 'D'	1.392"	1.155/1.152"	1.232/1.229"
DIRECTION	RH	RH	RH
	IN STOCK 1.11.02		IN STOCK 1.11.02



REFER TO DRG ML109 FOR ASSEMBLY & OPERATION

	DRAWN	IV	CHECKED
	DATE	24.10.2002	
	SCALE	1:1	
	MACHINE	VICEROY METAL LATHES	
	TITLE	THREAD DIAL INDICATOR	
	DWG N°.	ML109/1	

COMPUTERISED MACHINES AND SYSTEMS