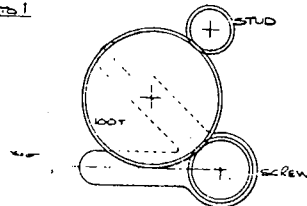


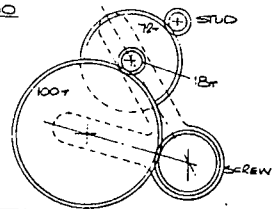
METRIC RANGE

SEE CHART CH 159

PITCHES 50 TO 1

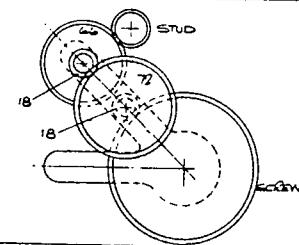


PITCHES 75 & 50

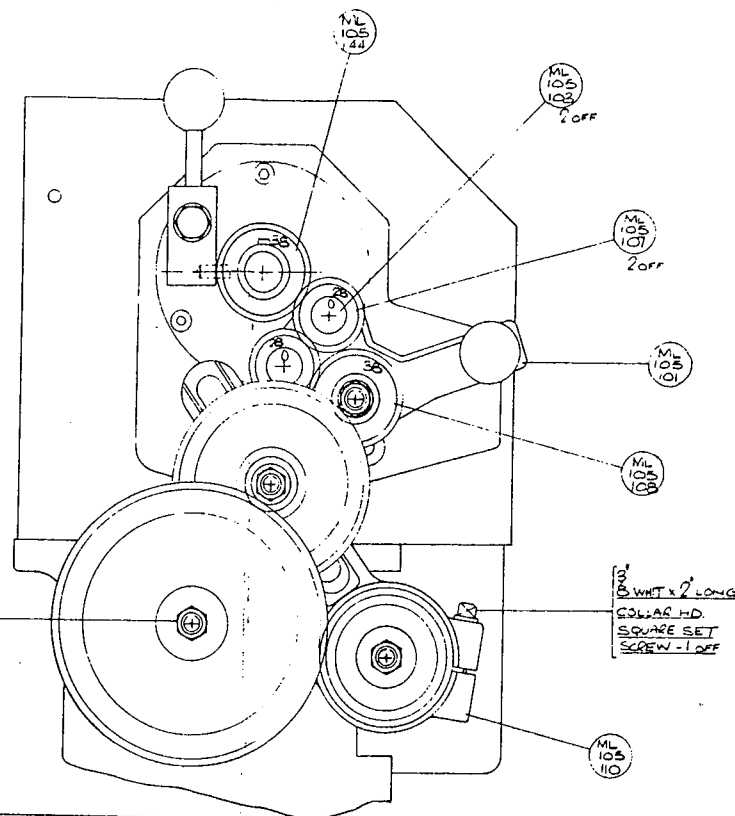


FINE FEEDS

PITCHES 1/2 TO 0.5



IF IN DOUBT ASK.

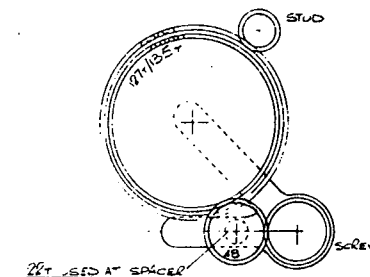


1/2 WHIT HDN NUTS & WASHERS (ML 105 111) 4 OFF EACH

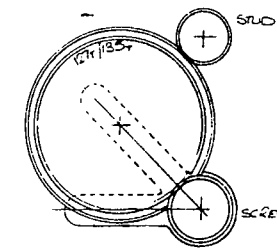
ENGLISH RANGE

SEE CHART CH 162

4 TO 7 TPI

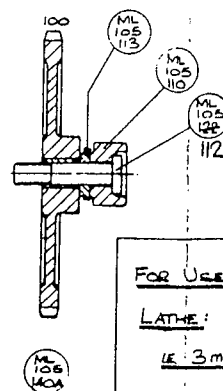
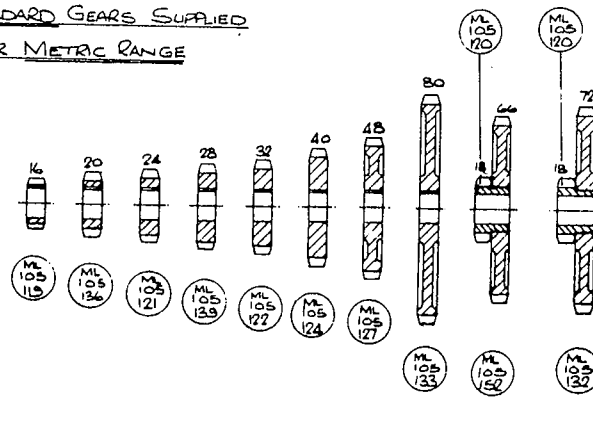


8 TO 40 TPI



STANDARD GEARS SUPPLIED

FOR METRIC RANGE



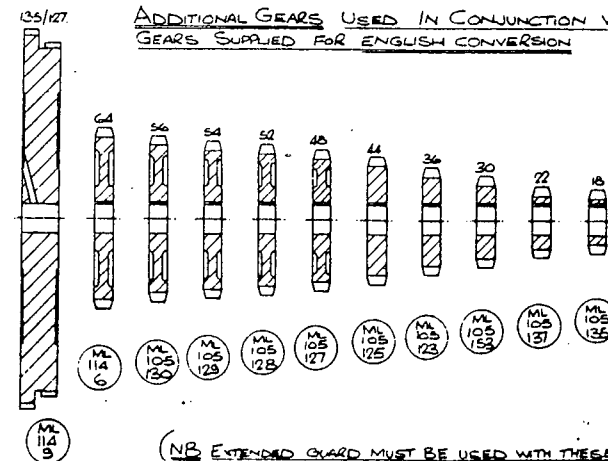
FOR USE ON A METRIC

LATHE:

1/2 3mm PITCH LEADSCREW

ADDITIONAL GEARS USED IN CONJUNCTION WITH

GEARS SUPPLIED FOR ENGLISH CONVERSION



(NB EXTENDED GUARD MUST BE USED WITH THESE GEARS)

5" 'VICEROY' METAL LATHE — GEAR TRAIN ARRANGEMENTS FOR T.D.S. 1/1 P.C.S. & T.D.S. 1 METRIC No. ML105/151

DENFORD MACHINE TOOLS LTD.

BRIGHOUSE HD6 1NB

U.K.

ML105/100A/M