

IF IN DOUBT ASK

DRG.No. ML130/1

2: HOLES DRILL $\frac{5}{16}$ " DIA THRO'
TAP 2. B.F. THRO'

2: HOLES DRILL $\frac{1}{4}$ " DIA THRO'
TAP $\frac{5}{16}$ " WHIT x $\frac{3}{8}$ " DEEP

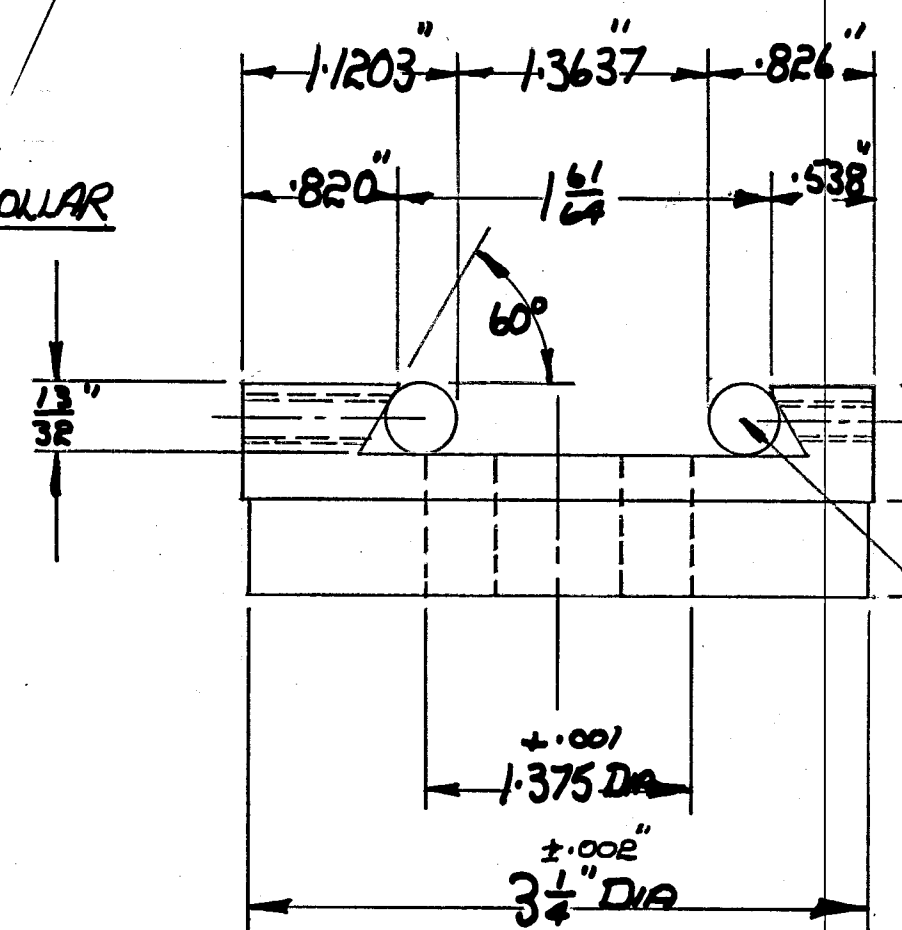
1: HOLE DRILL $\frac{13}{16}$ " DIA THRO'
TAP $\frac{1}{4}$ " B.S.W.

2: HOLES DRILL NO 51
MARK OFF FROM COLLAR

1: HOLE DRILL AND REAM $\frac{5}{8}$ " DIA

2: .375 DIA ROLLERS

MACHINE ALL OVER



DENFORD MACHINE TOOLS LTD. BRIGHOUSE, YORKSHIRE.

5" VICEROY LATHE, MILLING ATT. - SWIVEL PLATE SLIDE

No.	DESCRIPTION	CHK'D	APP'D	DATE
	ALTERATIONS			

LIMITS ON DIMENSIONS UNLESS OTHERWISE STATED.
ANGULAR $\pm \frac{1}{2}^\circ$ 3 PLACE DECIMAL $\pm .005^\circ$
FRACTIONAL $\pm .010$ " 4 PLACE DECIMAL $\pm .0005$ "

MATL. G.I.
MATL. SIZE CASTING
No. REQD. 1
MACHINE AT ∇
GRIND AT 'G'

DRAWN J.P.
TRACED
CHECKED
APPROVED
DATE 15-3-

DRAWING No. ML 13