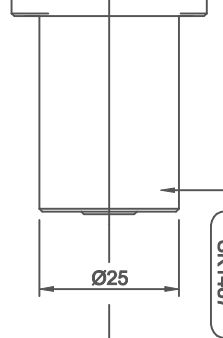
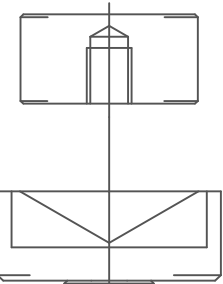
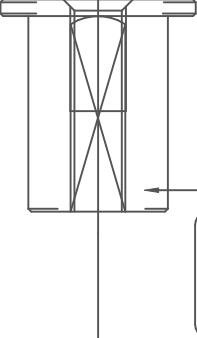
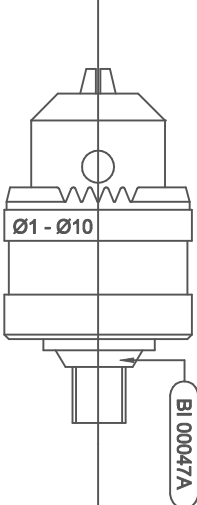
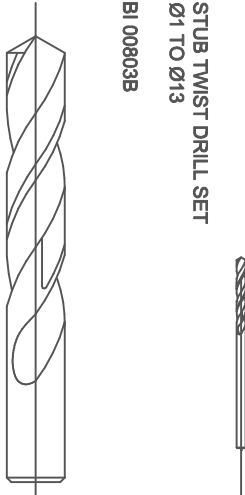
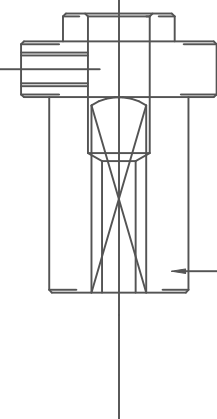
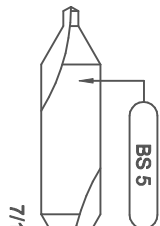


STUB TWIST DRILL SET
Ø1 TO Ø13
BI 00803B



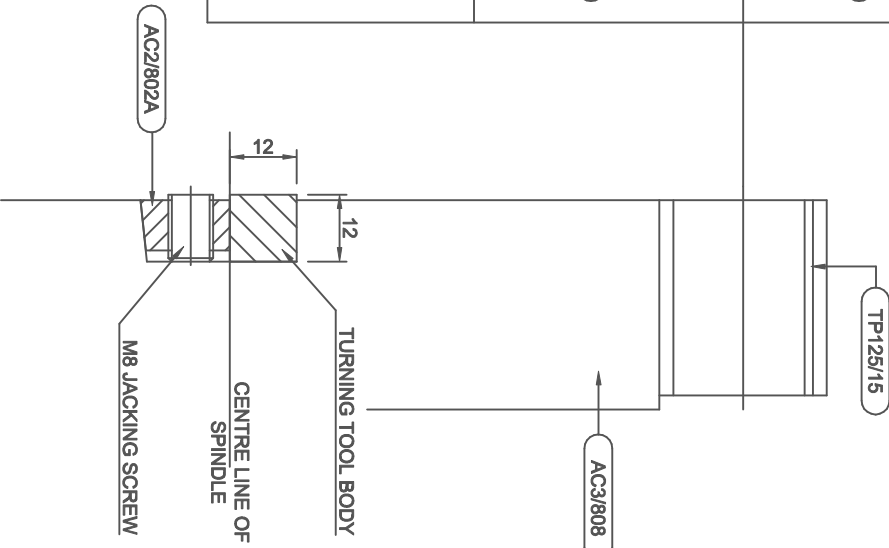
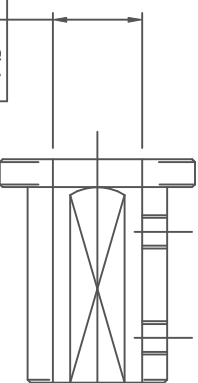
Part No	Ø d	Drill Ref
TP125/29A	0.3125"	BS 4
TP125/29B	0.4375"	BS 5
TP125/29C	0.1875"	BS 2



SET OF 3 BORING BARS: Ø8, Ø10 & Ø12
BI 00863H



Part No	Ø d
TP125/23	6
TP125/24	8
TP125/25	10
TP125/26	12
TP125/27	16
TP125/28	20



DENFORD

DRAWN	DRAWN	CHECKED	CHECKED BY
DATE	DATE		
SCALE	SCALE		
MACHINE	MACHINE		
TITLE	DM8 TOOL POST		

COMPUTERISED MACHINES AND SYSTEMS

DWG N°

TP126M-METRIC