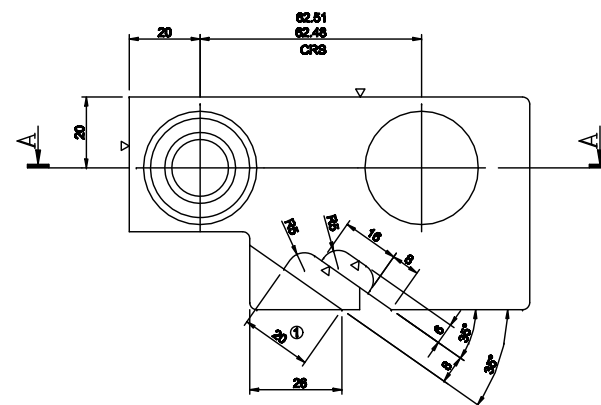
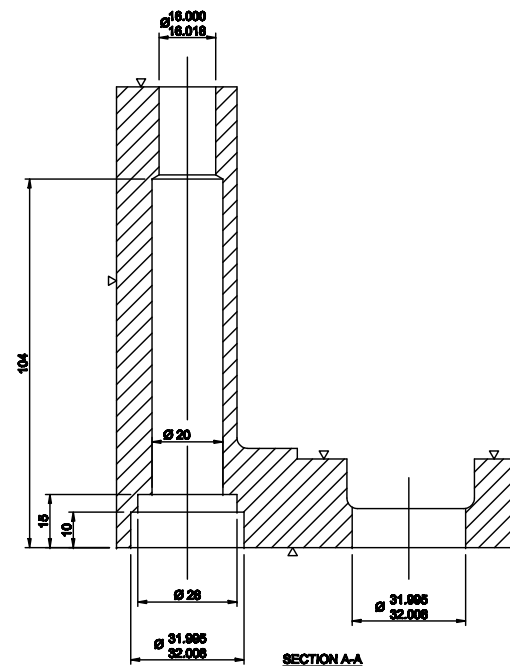
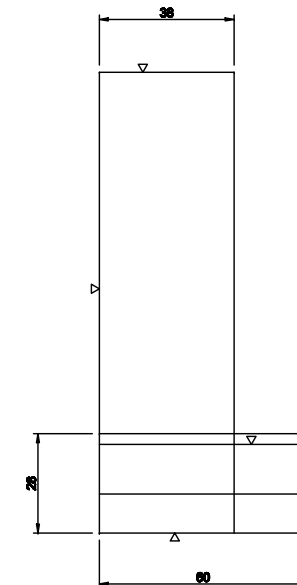
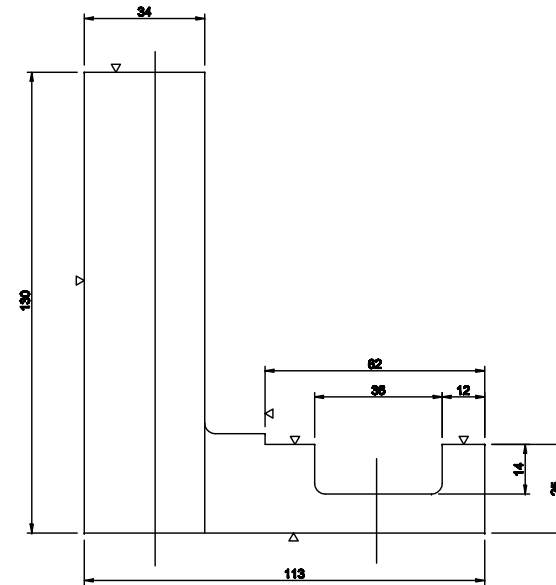
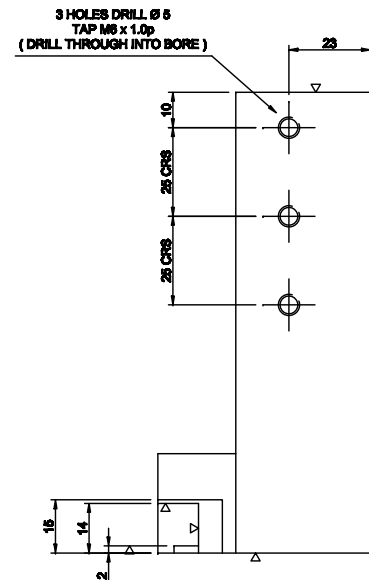


IF IN DOUBT ASK



**TOLERANCES ON SAND CAST
DIMENSIONS $\pm 1\%$**


**MACHINE WHERE MARKED ∇
TO Ra 3.2 MICROMETER**

CASTING TO BE STRESS RELIEVED

BREAK SHARP EDGES

UNLESS STATED OTHERWISE
ALL DIMENSIONS ARE IN mm
LIMITS ON DIMENSIONS ANGULAR $\pm 0.5^\circ$
LINEAR / DIAMETRAL $\pm 0.25\text{mm}$
MACHINE SURFACES Ra 3.2
ALL THREADS TO BE CLASS 6H / 6g
UNSPECIFIED GEOMETRIC TOLERANCES
TO LIE WITHIN THE TOLERANCE ZONE.



①	RECESS ADDED FOR SENSOR "OMRON E3S-X1B1"		2
		LVICKERY 03.01.01	
	ORIGINAL ISSUE		1
N°.	ALTERATION		ISSUE
DRAWN	IV	CHECKED	
DATE	05.10.99		3 RD
SCALE	1:1		
MATERIAL	CAST IRON GRADE 17		
TITLE	TURRET BEARING HOUSING		
PART N°.	TR3/767		