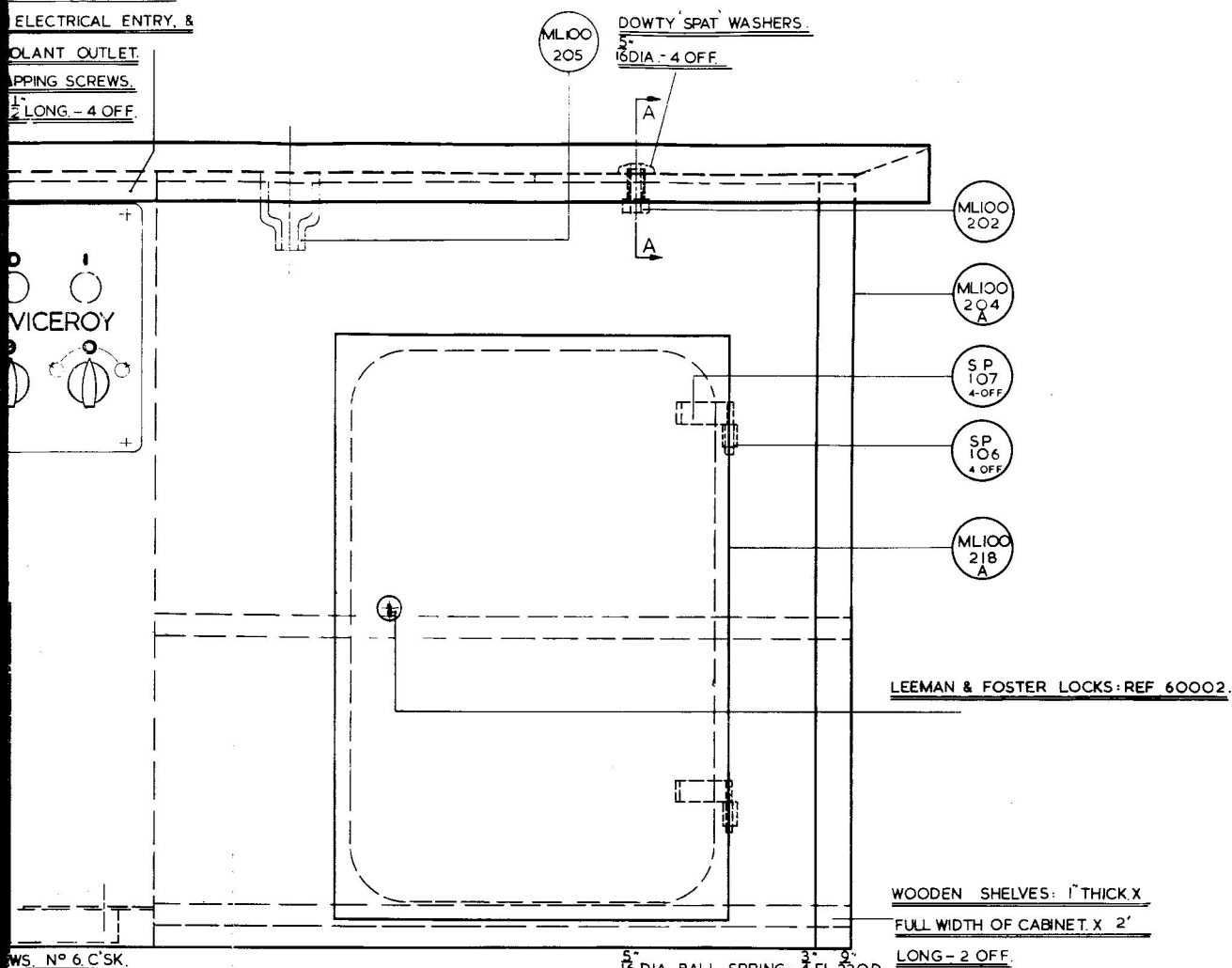


DIMMETS: 3" DIA. USED  
 ELECTRICAL ENTRY, &  
 FLUANT OUTLET.  
 TAPPING SCREWS.  
 1/2" LONG - 4 OFF.



BRAMMER V BELT. REF.  
 A' 2" X 40" X 3' 4" LONG.

HOOVER MOTOR 3/4 HP  
 SINGLE PHASE. REF. 2310-

HAF-1633A: THREE PHASE  
 REF. 2543-HAF-1633B.

SET SCREWS 5" 1/8" WHIT X 1"  
 LONG & STD. NUTS & WASHERS.  
 4 OFF EACH.

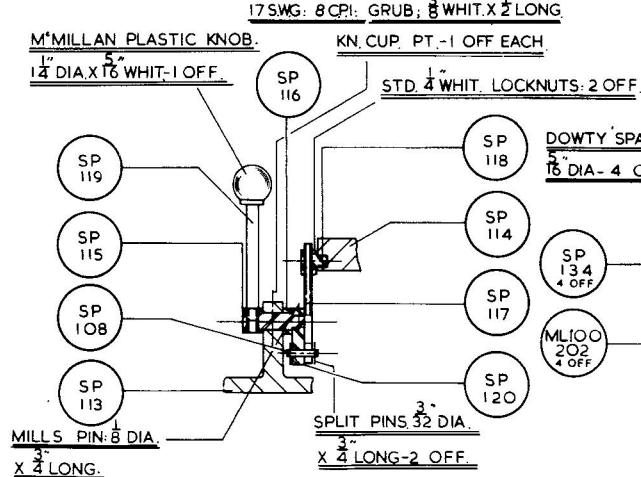
SP 114

SP 113

PS REF.

INTERNAL: 2 OFF.

FORM



SECTION THROUGH PLATFORM LIFTING  
 MECHANISM

SECTION A A

& 5 B.G. 5" 'VICEROY' METAL LATHES — CABINET ARRANGEMENT