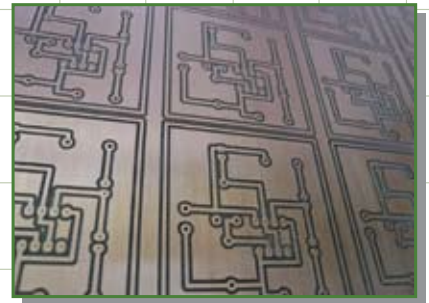
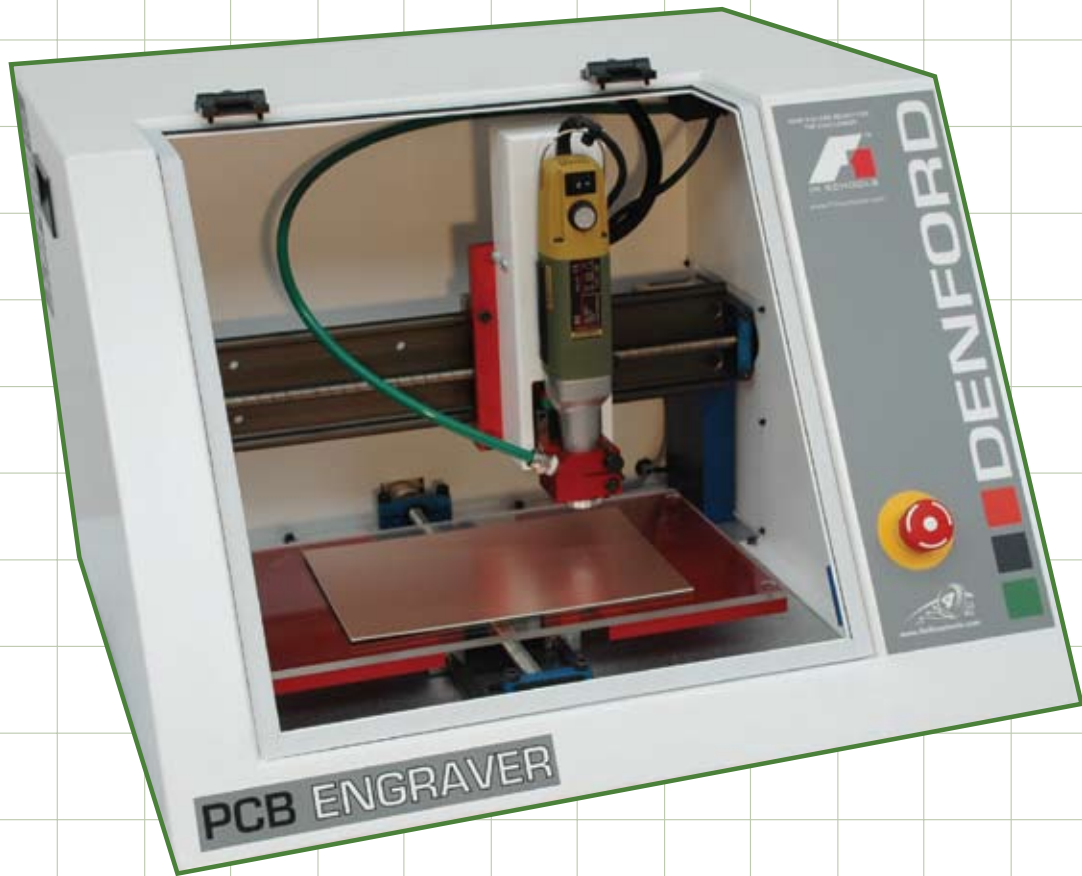




PCB Engraver

3 AXIS CNC PCB AND ENGRAVING MACHINE



The PCB Engraver is ideal for manufacture of PCB boards.

PCB Engraver

3 AXIS CNC PCB AND ENGRAVING MACHINE

A 3 axis CNC PCB and Engraving Machine with totally-enclosed guarding, suitable for all levels of education and training. The PCB Engraver is supplied with operating software incorporating Gerber and DXF import facilities. The PCB Engraver is ideal for cutting and engraving a range of resistant materials, including copper board, plastic and acrylic.

Denford's PCB Engraver is ideal for schools wishing to move away from traditional methods of chemical etching of PCB boards.

Denford's PCB Engraving machine features the latest 'Floating Head' technology. The Floating Head allows manufacture of PCB's, and engraving of uneven surfaces. The PCB Engraver is also ideal for batch manufacture of PCB boards.

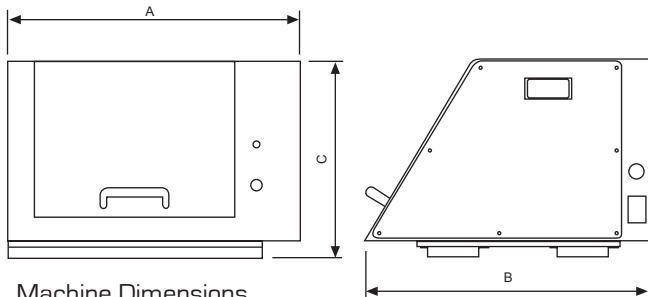
Tool changes are a simple process and allow drilling of larger holes, and the adjustable spindle speed and feedrate make the PCB Engraver ideal for cutting or engraving a range of resistant materials such as plastic, acrylic and copper board. The floating head combined with powerful new software, makes manufacture a quick and easy process.

THE PCB ENGRAVER COMES AS STANDARD WITH:

- Powerful operating software that is simple to use and allows multiple designs to be made at once.
- High speed spindle motor and floating head technology.
- Basic tools and depth-setting device.
- Installation and Instruction guides.
- Outlet for dust extraction.
- Sacrificial Table.
- USB Connection.

CAD, CAM and/or PCB design software, such as Denford's QuickCAM 2D Design, will be required in order to make the files required for machining [CNC G-Code or Gerber].

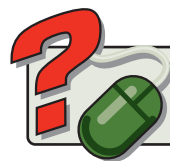
N.B. To allow optimum performance of the Floating Head dust extraction is essential.



- **Precision Leadscrews**
For high-accuracy positioning
- **100 Watt, 20,000 RPM Motor**
Ideal for small diameter tooling
- **Floating Head**
Allows machining over uneven surfaces
- **5,000mm/min Fast Traverse**
For speed of manufacture
- **Localised Dust Extraction**
Essential for accurate cutting with Floating Head
- **Spare Spindle Motor is Available**
For quick and easy toolchange

Please note, diagram for illustration purposes only.

MECHANICAL DETAILS	PCB Engraver
Machine Length [A]	570mm
Machine Depth [B]	585mm
Machine Height Bench Mounting [C]	385mm
Machine Weight	43kg
Table Size	360 x 210mm
Travel X Axis	330mm
Travel Y Axis	210mm
Travel Z Axis	40mm
Float Z Axis	5mm
Beam Clearance	50mm
Max. Spindle Speed	20,000 RPM
Spindle Speed Control	Manual
Max. Feed Rate	5000mm/min
Max. Contouring Feed Rate	1000mm/min
Mains Supply Requirements* [* Alternative supplies available on request]	Single Phase
Spindle Motor	100 Watts
Axes Motors	Stepper
Volts	230 Volts
Current	5 Amps



Get help, advice and share designs online
www.denfordata.com/bb

To get you up and running, Denford also offer a range of CNC Routers, Lasers, Milling Machines and Lathes, together with tooling packages, workholding kits and courseware.

Total Commitment to Manufacturing Technology in Education and Training Worldwide. ISO9001 compliant.

Denford reserves the right to alter machines and software specifications without prior notice. All Denford products are subject to copyright. All brands and products are trademarks or registered trademarks of their respective companies.