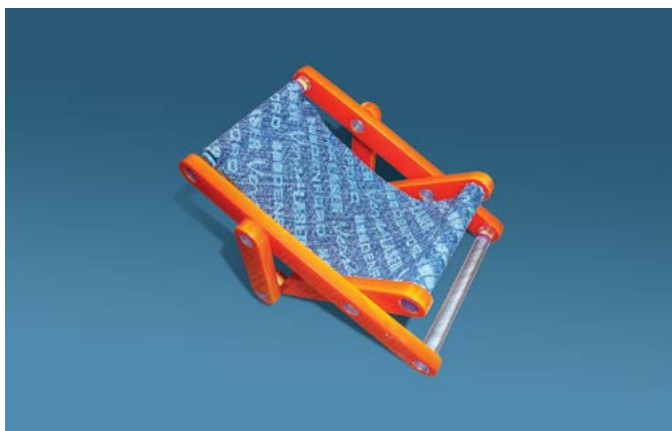
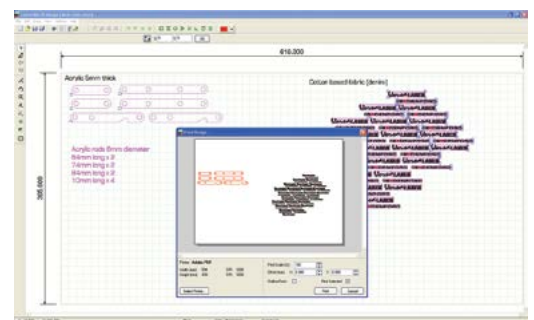
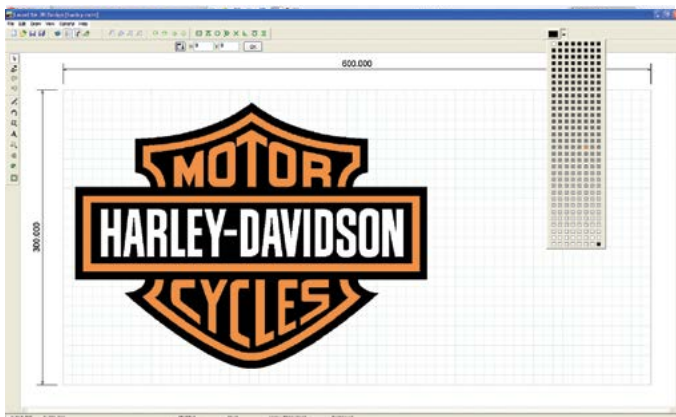
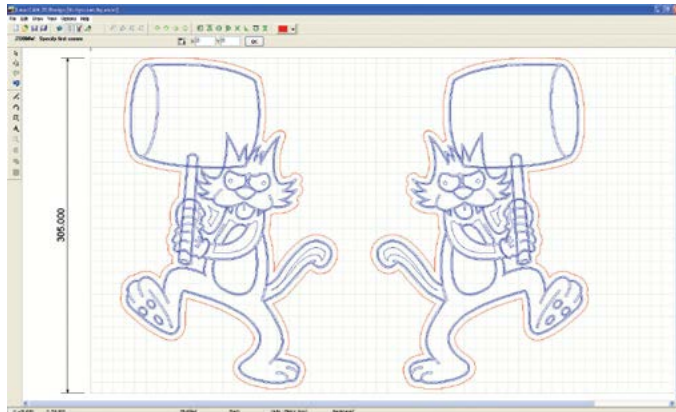


DENFORD

LaserCAM 2D Design

2D DESIGN SOFTWARE FOR LASER CUTTERS



LaserCAM 2D is a 2D CAD solution for use with Laser cutting machines. Simple designs can be created quickly and accurately and output to a laser with minimum effort. A host of import options make it the ideal way to manufacture logos, designs and projects on most types of Laser cutter & engraver.

LaserCAM 2D Design

POWERFUL TOOLS TO MAKE LASER MANUFACTURING EASY

LaserCAM 2D Design has all the features you need for laser cutting / engraving - all in one place. For example, the image importer includes image editing features to adjust brightness, contrast and gamma. The interactive preview and tools to create greyscale, black and white or halftone images will ensure you get the best results every time.

Custom colour palettes make it easy to pick the right colours for the laser driver (e.g. solid blue for vector engraving, solid red for vector cutting, black for raster engraving).

Grid size setup is easy - just click 'Match to Printer' and select the laser driver you're going to use.

Before printing your design, the handy preview window allows you to offset its position and scale, without altering the original. It also gives you the option to only output selected objects.

With a wealth of designs available in postscript (.EPS) and metafile (.WMF, .EMF) formats, you will never be stuck for logos or cool designs!

CAD DRAWING FEATURES

The following objects can be created to exact sizes:

Lines, Arcs, Polylines, Curves, Polygons, Ellipses, Text*, Multi-line Text with justification*, Hatched areas, Offset paths, Bitmap Image Contours.

*Any TrueType font available to Windows™ can be installed and used by LaserCAM

Drawing features allow easy creation and manipulation of objects:

Customisable grid size for snapping to fixed distances, Editable object nudge, Angular [polar] snap, Absolute and relative co-ordinate entry, Object property editor allows sizes, angles and positions to be entered exactly, Quick drawing navigation (pan & zoom) is realised by mouse

wheel operation, Object grips can be grabbed and moved, Various object snap modes can be activated at any time: End point; Mid point; Nearest; Intersection; Tangent; Perpendicular

Object modifiers allow objects to be altered quickly and accurately:

Move, Scale, Rotate, Mirror, Copy, Paste, Join, Explode, Group and Ungroup, Customisable colour palettes for easy configuration to match the Laser driver, Rectangular array, Circular array, Boolean shape operators: Union; Intersect; Split; Subtract.

IMPORT/EXPORT FEATURES

Import:

- Raster Images: .JPG; .BMP; .ICO; .EMF; .WMF
- Clipboard paste from other drawing packages such as CorelDraw.
- PCB Gerber file (RS274X).
- AutoCAD: .DWG and .DXF (versions up to 2000).
- Vector image clipart metafiles: .WMF and .EMF
- Fonts: True type .TTF font files.
- Encapsulated PostScript: .EPS vector files.

Export:

- AutoCAD: .DXF files can be saved.
- QuickCAM 2D Design: .MCM files saved in LaserCAM can also be opened in QuickCAM 2D for CNC machining.

SYSTEM REQUIREMENTS

IBM or 100% Compatible PC,

Pentium III, 1Ghz, 512MB RAM,

200MB Free Hard Disk Space,

Microsoft Windows XP; NT; 2000; Vista; Windows 7, 8

CD-ROM Drive,

OpenGL 3D Accelerator Graphics Card with 128MB RAM supporting at least 1024 x 768 screen resolution.

CNC Machines require USB Connection.