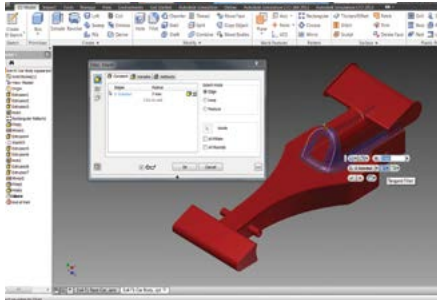


F1 Consumables

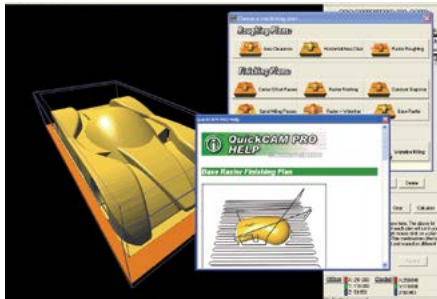
F1 IN SCHOOLS EQUIPMENT & CONSUMABLES



DESIGN

3D Design Software AUTODESK

Design your car using Autodesk® 3D Design Software. Autodesk and F1 in Schools™ partnered to offer design tools to help prepare next-generation designers. Students and schools participating in F1 in Schools™ can access an extensive portfolio of Autodesk® 3D design software free of charge. To get your software please visit: www.f1inschools.com/autodesk



QuickCAM Pro

An advanced, yet simple to use, wizard-based CAM package, which is used to create cutter paths for machining 3D parts on a milling machine or router.

Site Licence

BIO1806P



ANALYSE

Virtual Wind Tunnel

F1 VWT Analysis Software
Single Seat
5 User Licence
Site Licence

BIO1841
BIO1841A
BIO1841C



MAKE

CNC Machine Options for F1 Car Manufacture:

MRC 40	MRC004000
Compact 1000 Pro (Metal Cutting)	MRC003000
Router 2600	MRP002000
Router 2600 Pro (Metal Cutting)	MRP003000
Router 6600	MRF002000
Router 6600 Pro (Metal Cutting)	MRF003000



F1 in Schools Car Fixture

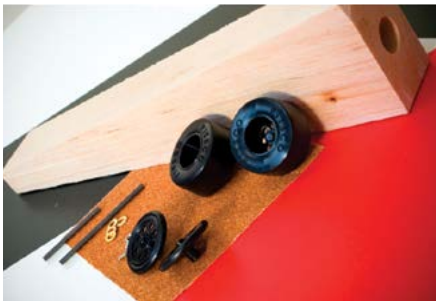
Comes as standard with two clamping systems to enable the manufacture of Bloodhound SSC & Formula 1® Class cars. The fixture clamps directly to the T-slotted table on the MRC 40 (T-slotted table not standard equipment with MRC 40), Compact 1000 Pro and Router 2600/Pro and is also suitable for use on the VMC 1300 (it is necessary to remove the tool changer to fit the fixture)

NR1/0400UA


Formula 1® Class Car Kit: Fusion

Includes set of 4 x black Fusion wheels, 1 x sandpaper, 2 x screw eyes, 2 x axles, straw wheel spacers, 4 x washers, 1 x Formula One Class balsa wood blank.

N13226F1R01


Bloodhound SSC Class Car Kit: PX & LX Wheels

Includes 2 x PX rear wheels and 2 x LX front wheels, 1 x sandpaper, 2 x screw eyes, 2 x axles, straw wheel spacers, 4 x washers, 1 x Bloodhound SSC Class balsa wood blank.

N13226DE1


Formula 1® Class Wheels

Set of Fusion Wheels - Black (pack of 4)
 Set of Fusion Aluminium Effect Hubs (pack of 4)
 Fusion Wheels - Black (pack of 100)
 Fusion Aluminium Effect Hubs (pack of 100)

 N54531/OSET
 N54608/OSET
 N54531
 N54608

Bloodhound SSC Class Wheels

Set of PX and LX Wheels - 2 Front, 2 Rear - Black
 PX Wheels - Rear - Black (pack of 100)
 LX Wheels - Front - Black (pack of 100)

 N21899/OSET
 N30848
 N30846

Formula 1® Class Wheel Kit

includes:
 4x Wheels,
 2x Tether Line Guides,
 4x Axle Inserts/Grommets (6mm)
 2x Axles

N14759

F1 Consumables

F1 IN SCHOOLS EQUIPMENT & CONSUMABLES



MAKE

NEW F1® Model Block (pack of 10)

This official F1® Model Block measures 223mm x 65mm x 50mm, with a consistent weight of 112 grams and contains a pre-drilled hole for the CO2 cartridge.

F1223/10



Formula 1® Class Balsa Wood Blank (pack of 10)

This official Formula 1® Class balsa wood blank measures 223mm x 65mm x 50mm and contains a pre-drilled hole for the CO2 cartridge.

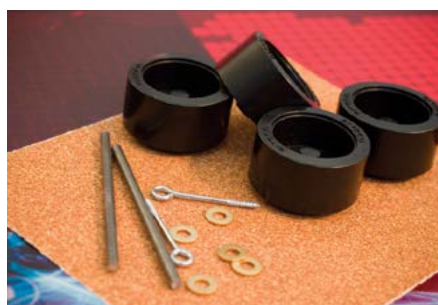
N28886/10



Bloodhound SSC Class Balsa Wood Blank (pack of 10)

Blank measures 304mm x 41mm x 70mm and contains a pre-drilled hole for the CO2 cartridge.

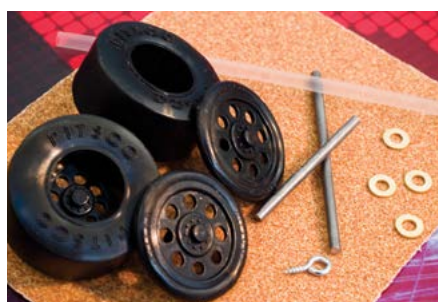
N53347



Formula 1® Class Kit Bag (for one car, excluding balsa blank)

Includes set of 4 x black Fusion wheels, 1 x sandpaper, 2 x screw eyes, 2 x axles, straw wheel spacers, 4 x washers.

N14758:04



Bloodhound SSC Class Kit Bag (for one car, excluding balsa blank)

Includes 2 x PX rear wheels and 2 x LX front wheels, 1 x sandpaper, 2 x screw eyes, 2 x axles, straw wheel spacers, 4 x washers.

N14634:04



**Paint Stand
(for use with Bloodhound SSC & Formula 1® Class Cars)**

This new, improved design holds your car during the painting process. The car is suspended by the cartridge hole and once on the stand, can be rotated to paint all sides.

N54528



Axles

Use the strength of steel to mount your model wheels

Long Axles [65mm] (pack of 100).

N53341

Short Axles [43mm] (pack of 100).

N53728



Screw Eyes

Use these screw eyes to keep your car on the track

1/4" Screw Eyes [6.34mm] for use with Bloodhound SSC Class Cars (pack of 100).

N15109

1" Screw Eyes [25.4mm] for use with Formula 1® Class Cars (pack of 100).

N53693

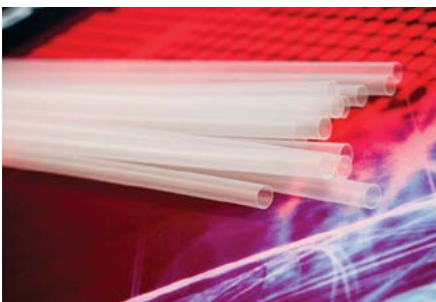


Washers

Reduce friction between the wheel and the car body.

Washers for use with Bloodhound SSC & Formula 1® Class Cars [4mm] (pack of 100).

N15194



Straw Wheel Spacers

For use as axle bushings

Straw Wheel Spacers for use with Bloodhound SSC & Formula 1® Class Cars (pack of 500).

N33890

F1 Consumables

F1 IN SCHOOLS EQUIPMENT & CONSUMABLES



Decal Stickers

Decal Stickers
[pack of 25 sheets]

NF1009



TEST

Smoke Tunnel Including Fog Maestro Smoke Generator

A harmless smoke-like vapour passes through the Smoke Tunnel demonstrating airflow around the object.

N13277



Fog Maestro Smoke Generator

Fog Maestro Smoke Generator inc. 1 litre of Fog Fluid (Generator can be used with the Smoke Tunnel or Scout Wind Tunnel).

N25100

1 Litre of Fog Fluid

N56805



Scout Wind Tunnel

A wind tunnel specifically designed to measure frontal drag on F1® cars. It is 1240mm in length and features a powerful motor that draws air through at approx 40mph. Includes 1 Bottle of Manometer Oil.

N24761

Replacement Bottle of Manometer Oil.

N59108



RACE

Elevated Racetrack

25 Metre Track
[includes 11 sections and 12 legs].

N22049



F1® Race System

Designed for use with the Elevated Racetrack, the F1® Race System includes:
 1 x start gate, 1 x finish gate, 2 x launch triggers, 2 x launchers, 1 x power supply, 1 x control box and Race Time Management Software.

N32483



Track Banners

F1 in Schools Banners for use with Elevated Racetrack, featuring chequered flag borders and F1 logo (complete with velcro to attach to track)

NPB002



Test Cartridges

8 Gram Test Cartridges for Long Track (pack of 360). (for test only. NOT suitable for competition).

B103002A



Competition Cartridges

8 Gram Competition Cartridges for Long Track (pack of 120).

N53337

4 Gram Competition Cartridges for Short Track (pack of 120).

N53338



Deceleration Towels

Set of 2 deceleration towels. (Used to stop the cars at the end of the track.)

N18060

Denford Consumables

MATERIALS & CONSUMABLES



American Maple Wood Block

A creamy white hardwood with a close grain and fine, even texture.

Easy to work and finish, without the need for sanding.

Billet size: 160mm x 100mm x 20mm	Each	BI03509D
	Pack of 50	BI03509G



Round Pine Billets

Ideal for use with the Rotary Fixture attachments.

Billet size: 65mm Dia. x 150mm Long	Pack of 10	BI03509J
-------------------------------------	------------	----------



FOAM

These rigid, closed cell foam blocks are ideal for the rapid machining of parts on the full range of Denford Milling Machines and Routers.

High Density Foam

Ideal for most 3D prototyping applications. Offering plenty of surface detail, it is commonly used in moulds for vacuum forming and is also suitable for painting.

Billet size: 150mm x 110mm x 45mm	Each	BI03508
	Pack of 50	BI03508A



Billet size: 70mm Dia. x 150mm long	Each	BI03508DZ
	Pack of 15	BI03508E

Ideal for use with the Denford 4th axis programmable rotary fixture.



Model Foam

A low density and low cost foam product with easy machining properties which is particularly suitable for quick 3D realisation of design ideas.

Billet size: 160mm x 100mm x 50mm

Each
pack of 50

BI03508B
BI03508Z



MODELLING BOARD

A high density (0.47gms per cubic metre) board ideal for high definition 3D work.

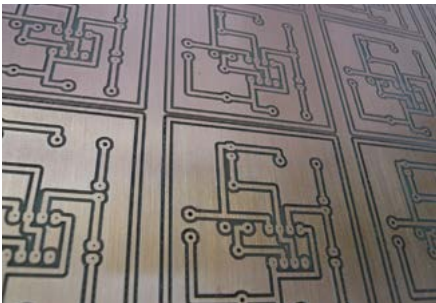
Modelling Board

For prototyping high quality models

Billet Size: 1500mm x 500mm x 50mm

Each

BI03508K



PCB BOARD

Ideal for use in conjunction with VR CNC Milling 5, PCB manufacturing feature.

Copper Coated Clad Pcb Board (Single Sided)

Size: 233.4mm x 160mm x 1.6mm

Each

4X40079



Photo Resist Coated PCB Board (Single Sided)

High quality dip coated positive working photoresist.

This high resolution photoresist contains a dye which gives a good contrast against the copper allowing boards to be easily inspected at the developing stage. Panels are protected by a specially designed light-proof blue film which allows them to be guillotined without the risk of fracturing the photoresist.

Size: 233.4mm x 160mm x 1.6mm

Each

4X40080

Denford Consumables

MATERIALS & CONSUMABLES



ALUMINIUM

Free cutting aluminium bars and billets are ideal for producing quick prototypes of metallic components. Easily polished, they yield professional looking component parts.

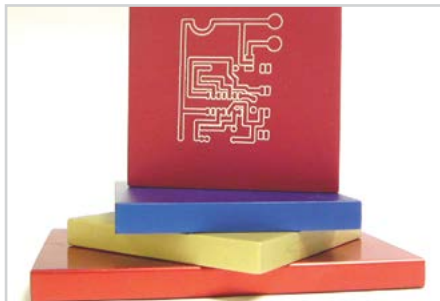
Aluminium Bar

Suitable for cutting on Denford Lathes.

Bar Size: 20mm Dia. x 55mm.

Non-Anodised

Each	BI03512A/1
Pack of 50	BI03512A



Aluminium Billet

Suitable for cutting on Denford Milling Machines.

Billet Size: 100mm x 100mm x 12mm.

Non-Anodised

Each	BI03511
Pack of 50	BI03511B

Red-Anodised

Each	BI03511A
Pack of 50	BI03511C



EXTRUDED ACRYLIC SHEET

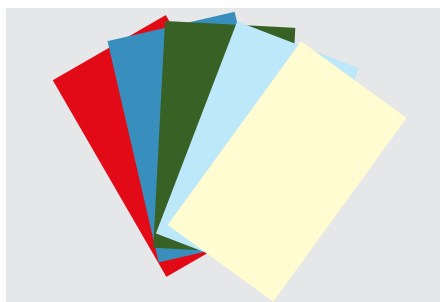
Excellent thermoforming characteristics enabling the production of intricate, delicate shapes.

30 off 3mm **Red** 600mm x 300mm.

BI03523

30 off 3mm **Yellow** 600mm x 300mm.

BI03523A



CAST ACRYLIC SHEETS

High quality, perfect surface finish and superb optical qualities.

30 off 3mm **Red** 600mm x 300mm.

BI03522

30 off 3mm **Blue** 600mm x 300mm.

BI03522A

30 off 3mm **Green** 600mm x 300mm.

BI03522B

30 off 3mm **Transparent Blue** 600mm x 300mm.

BI03522C

30 off 3mm **Transparent Yellow** 600mm x 300mm.

BI03522D



HIGH IMPACT POLYSTYRENE

Rigid, easy cutting thermoplastic used for 2D projects. Can be quickly "layered" in different colours to produce low cost nameplates etc. Easily held on temporary machine tables using heavy duty double sided tape.

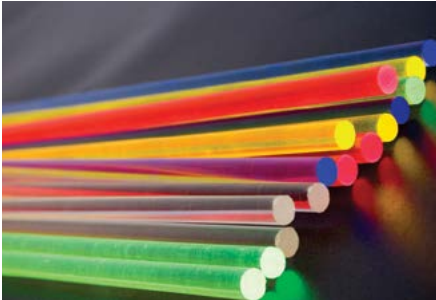
Billet Size: 160mm x 90mm x 2mm.

White

Pack of 50	BI03501F
------------	----------

Multi-Coloured

Pack of 50	BI03501
------------	---------



ACRYLIC RODS

1 metre x 6mm dia. fluorescent round – Red.	BI03524
1 metre x 6mm dia. fluorescent round – Yellow.	BI03524A
1 metre x 6mm dia. fluorescent round – Green.	BI03524B
1 metre x 6mm dia. fluorescent round – Blue.	BI03524C
1 metre x 6mm dia. round – Clear.	BI03524D



CUTTER PLOTTERS

Consumables Pack

Consumables for projects including:

- coloured vinyl
- coloured card
- button magnets
- mirrors
- double sided tape

BI01819CRC



VINYL

9 x 10 metre rolls of assorted coloured gloss finish 200mm width vinyl (for use with Cutter Plotters).

BI03521

Signmaking Vinyl Education Pack Includes:-

BI01819X

5M x 610mm Signmaking Vinyl in the following colours: white, black, buttercup, red, green, blue, ultramarine, gold and silver. 1M x 500mm Hotmark 60, soft heat sealable 50micron matt film (for use on fabrics) in the following colours: black, white, red and blue. High Tack Application Tape 100M x 300mm & 100M x 150mm. 5 x Plastic Applicator. 5 x Snap off Knife. 1 x Weeding Tweezer. 1 x Sheet Slitter.



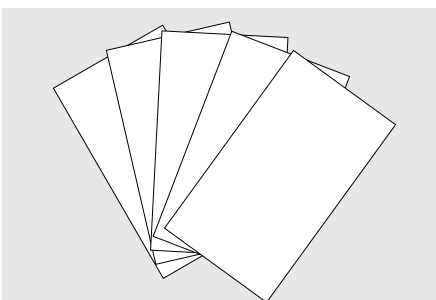
DOUBLE SIDED TAPE

Heavy Duty

Size: 25mm x 33m

Pack of 10

BI03502A



PLOTTER CARD

White Plotter Card (330gsm)

Size: 450mm x 320mm

Pack of 100

BI01819NE