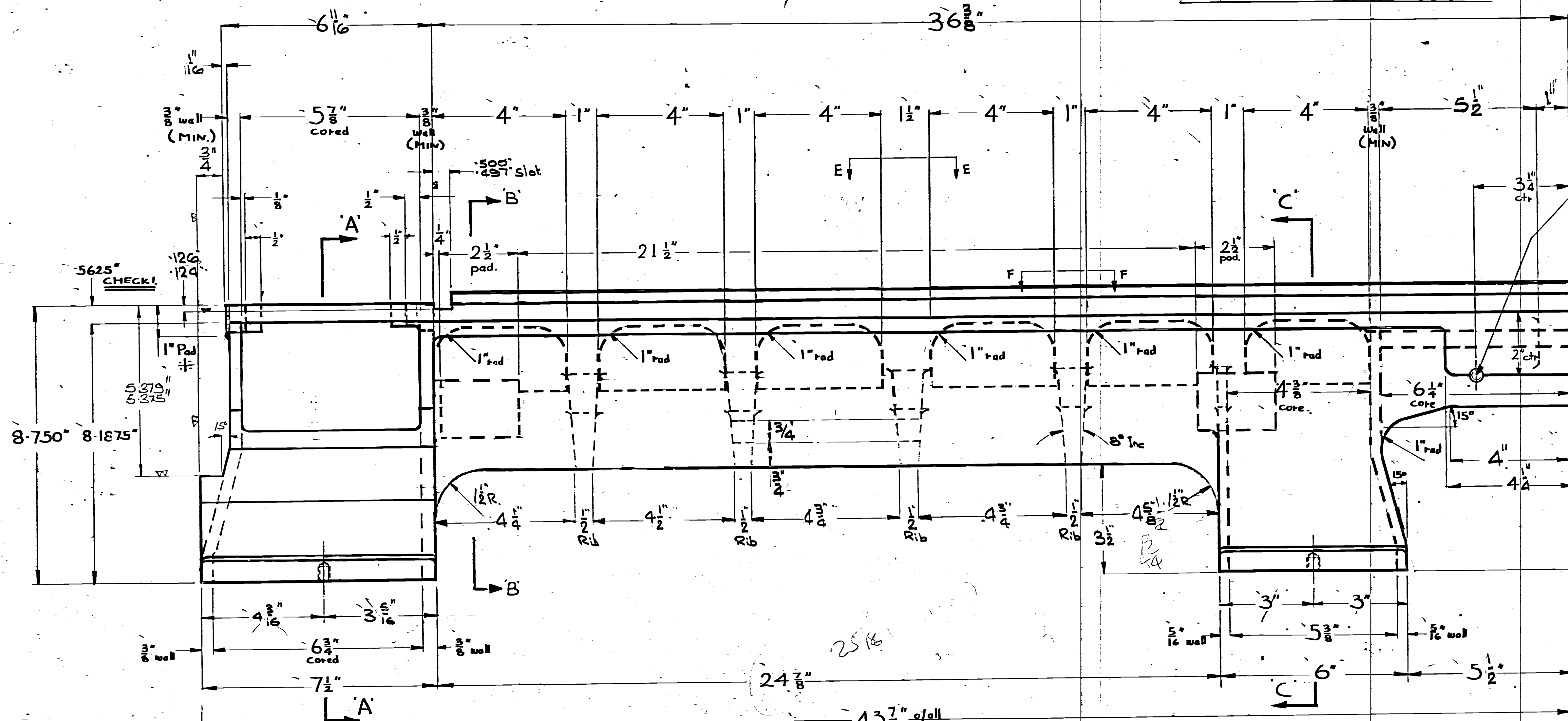
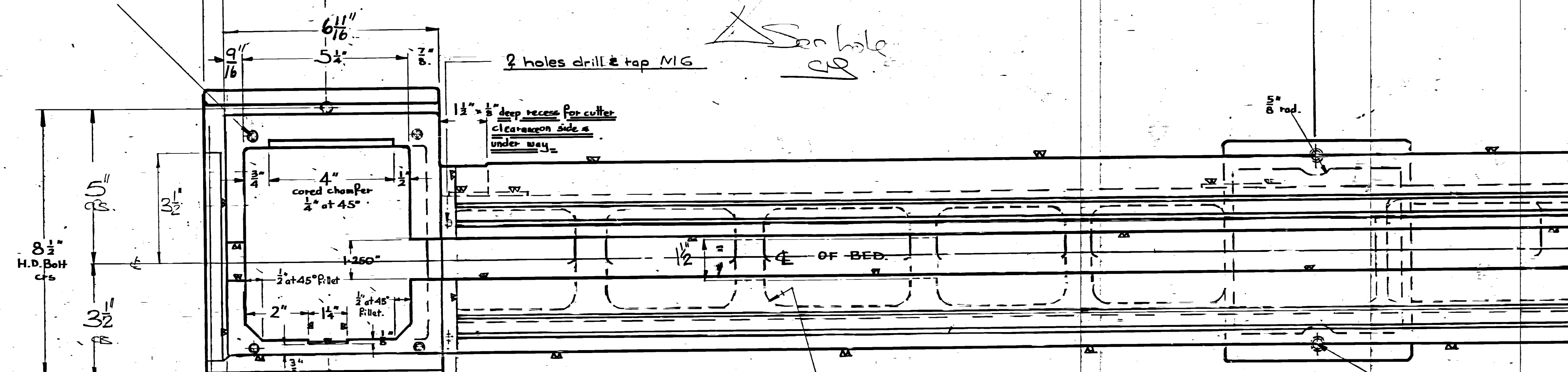


IF IN DOUBT ASK.



4 holes drill & tap M10
MARK OFF FROM HEADSTOCK



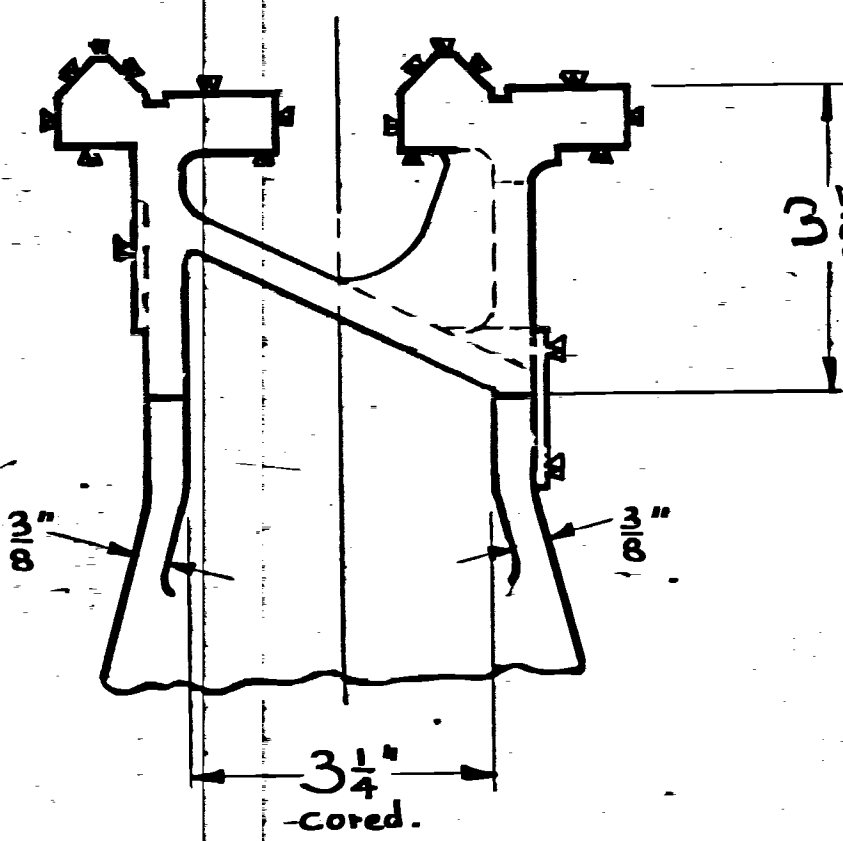
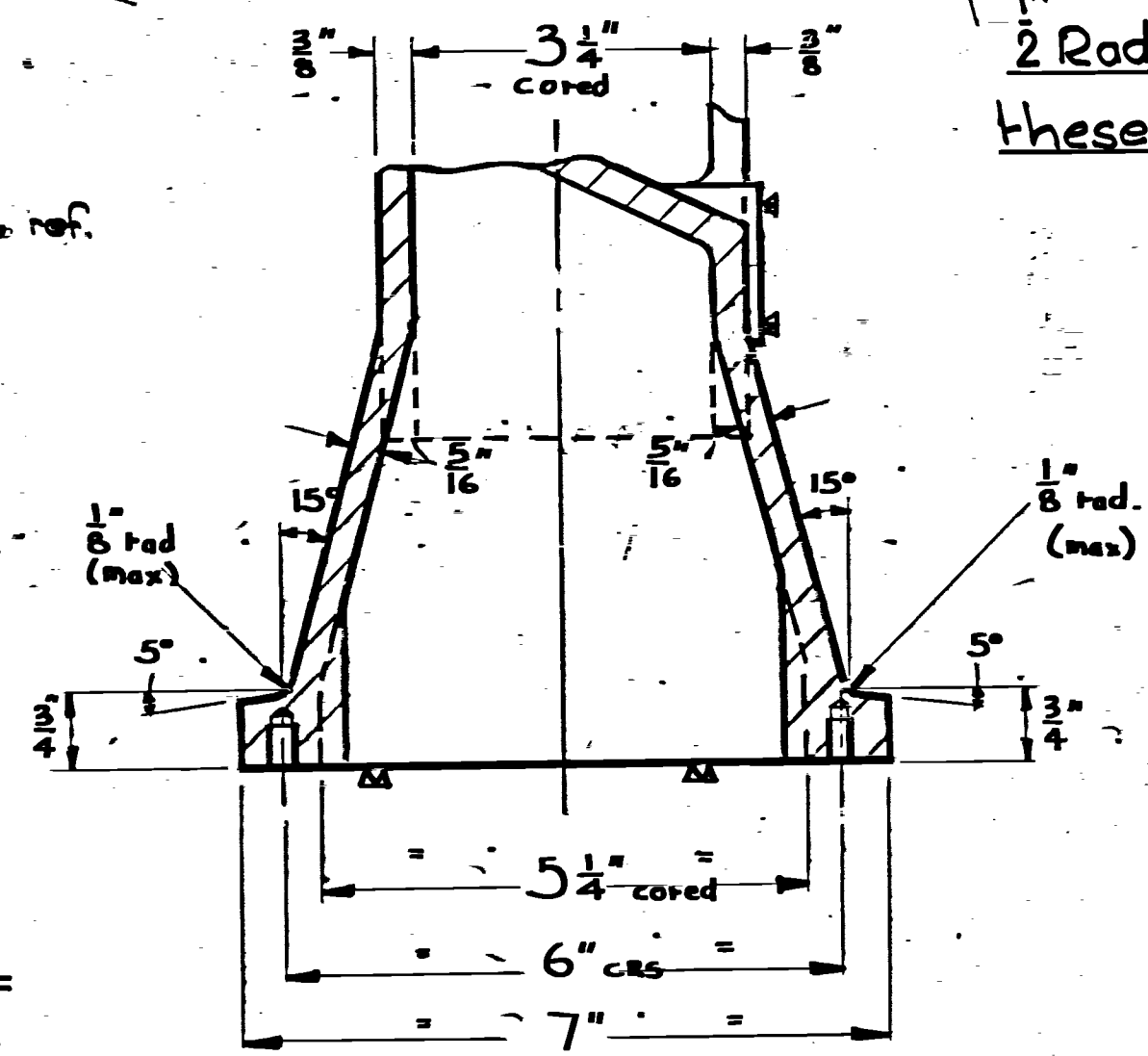
N.B. Checking face for headstock - Gear Box & Feed Box fitting

2 holes drill & tap M8

2 Rad on all these corners.

2 holes drill & tap M8

Important Dimension



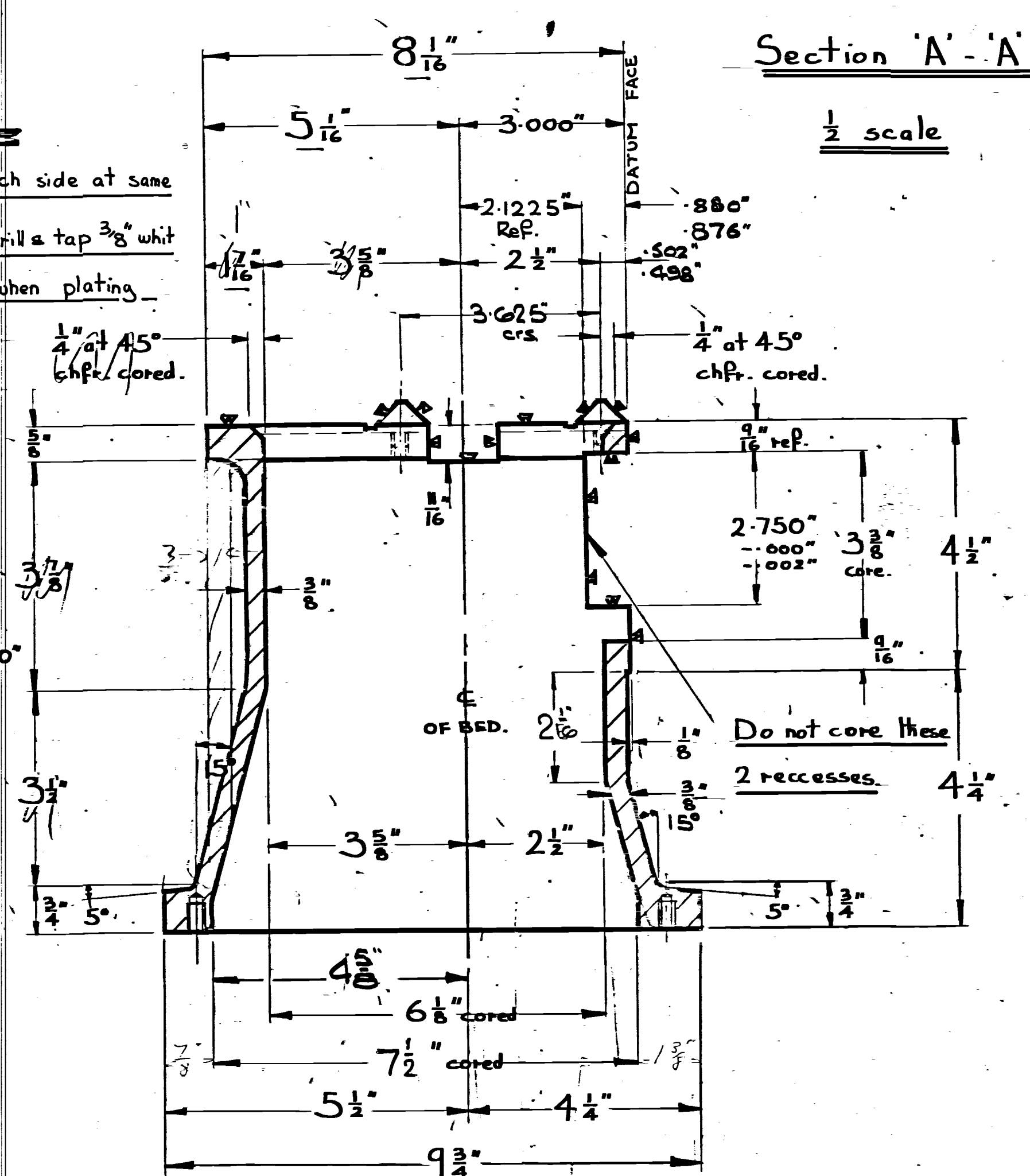
All radii 1/4 inch unless stated

Machine at w

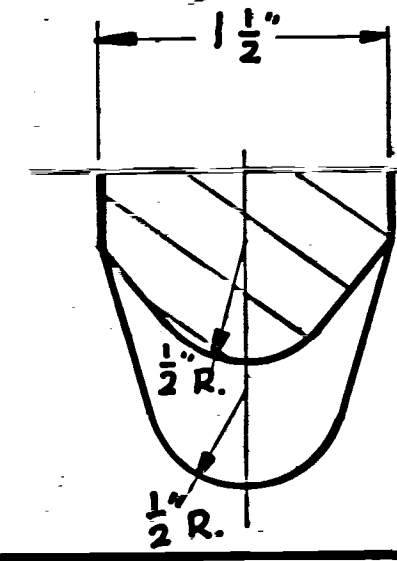
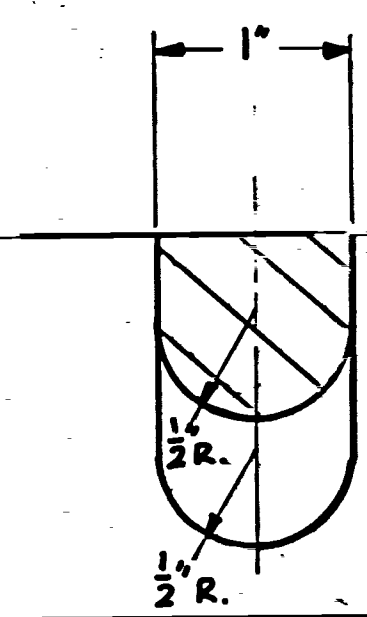
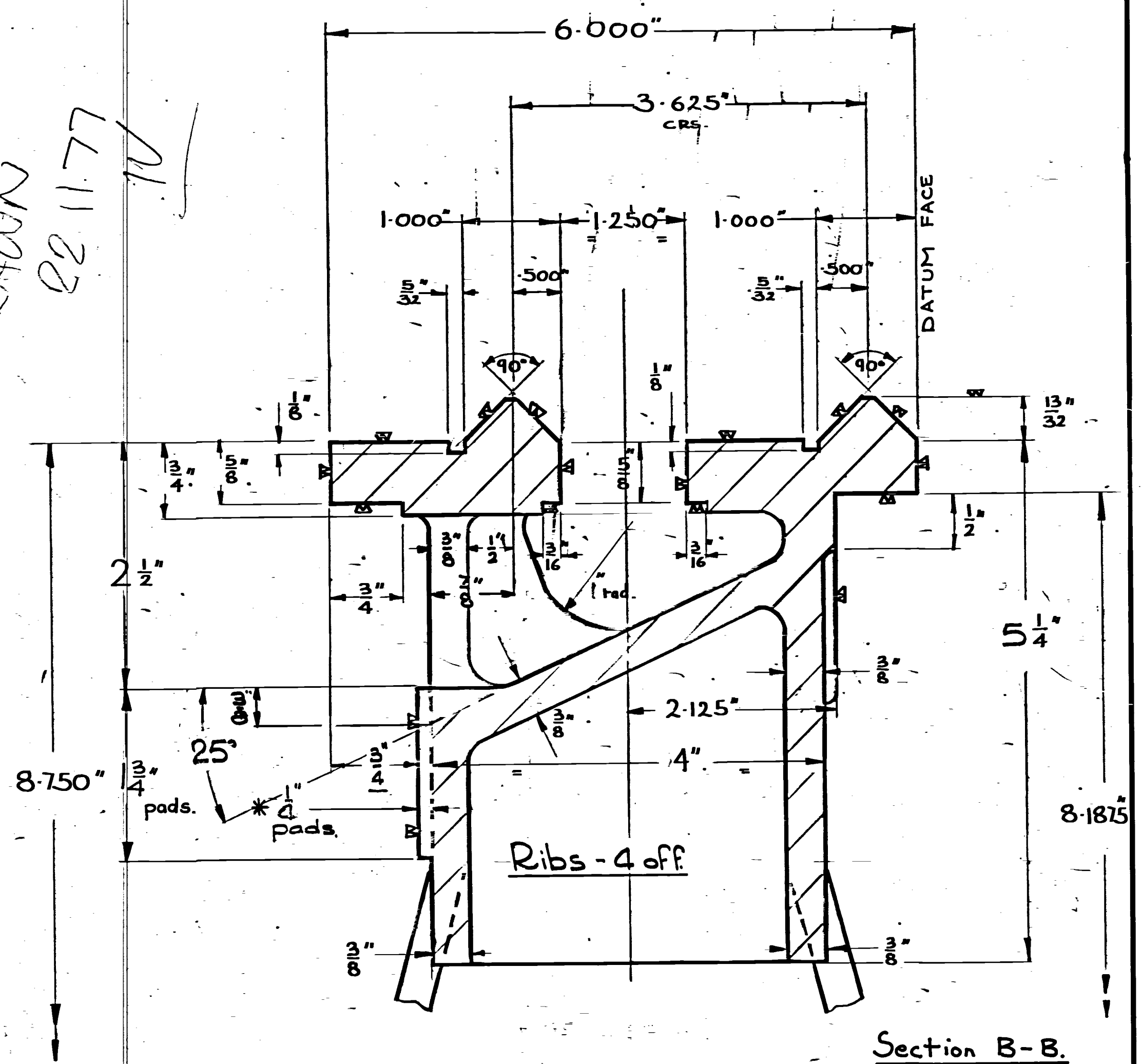
Note! Before attempting to gang mill bed ensure that vee slides & centre core are square to this pad.

* These dimensions are not important provided that the 2 machined pad surfaces are parallel with each other & are parallel with the machined vees on the top of the bed.

Section C-C - 1/2 scale.



REDRAWN 22.11.77



5" Viceroy Gear Box Lathe - Bed.