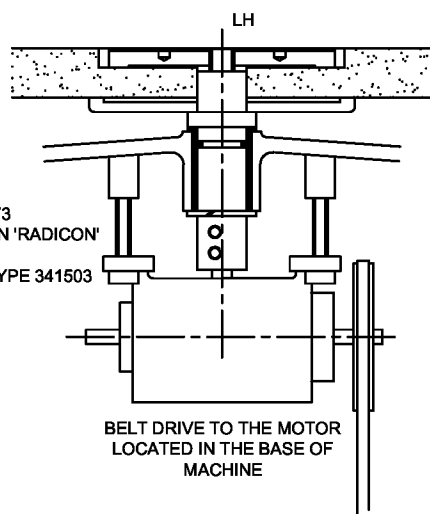
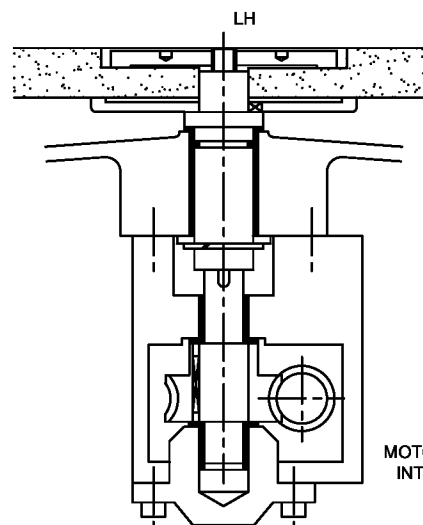


DATE PRIOR TO 1973  
 GEARBOX DAVID BROWN 'RADICON'  
 REF A112-1L-10  
 GEARBOX HOLROYD: TYPE 341503  
 RATIO 10 : 1  
 WHEEL RPM 110  
 WHEEL TRAY ALUMINIUM  
 ROTATION CLOCKWISE



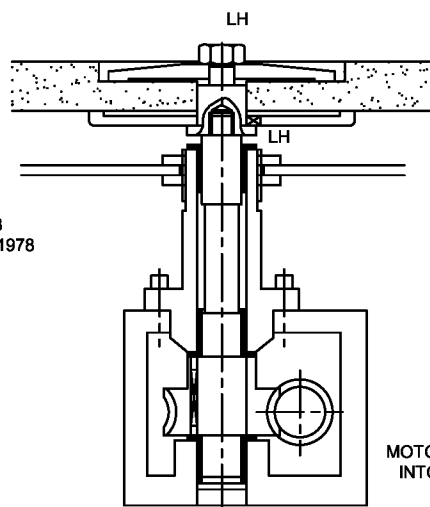
BELT DRIVE TO THE MOTOR  
 LOCATED IN THE BASE OF  
 MACHINE

DATE 1973 TO 1974  
 RATIO 10.5 : 1  
 WHEEL RPM 130  
 WHEEL TRAY ALUMINIUM  
 ROTATION CLOCKWISE



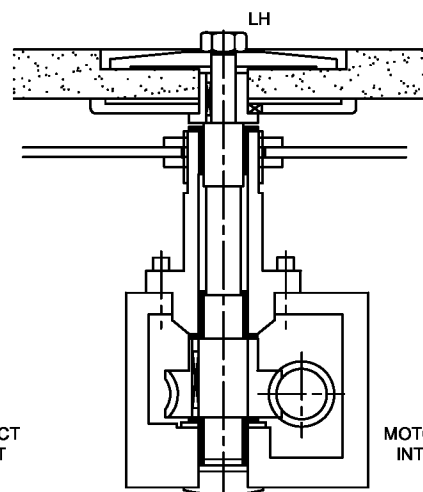
MOTOR MOUNTED DIRECT  
 INTO THE WORMSHAFT

DATE 1974 TO 1981  
 RATIO 10.5 : 1 TO 1978  
 RATIO 13.5 : 1 FROM 1978  
 WHEEL RPM 130 / 105  
 WHEEL TRAY FIBRE GLASS  
 ROTATION CLOCKWISE




MOTOR MOUNTED DIRECT  
 INTO THE WORMSHAFT

DATE 1981 TO 1993  
 RATIO 13.5 : 1  
 WHEEL RPM 105  
 WHEEL TRAY FIBRE GLASS  
 ROTATION CLOCKWISE



MOTOR MOUNTED DIRECT  
 INTO THE WORMSHAFT

<div style="border: 1px solid black; padding: 5px; text-align: center;">             COMPUTERISED MACHINES AND SYSTEMS         </div>	DRAWN	IV	CHECKED
	DATE	19.09.2002	
	SCALE		
	MACHINE	TDS12/16	
	TITLE	GEARBOXES	
	DWG N°.	SH5008/GB	