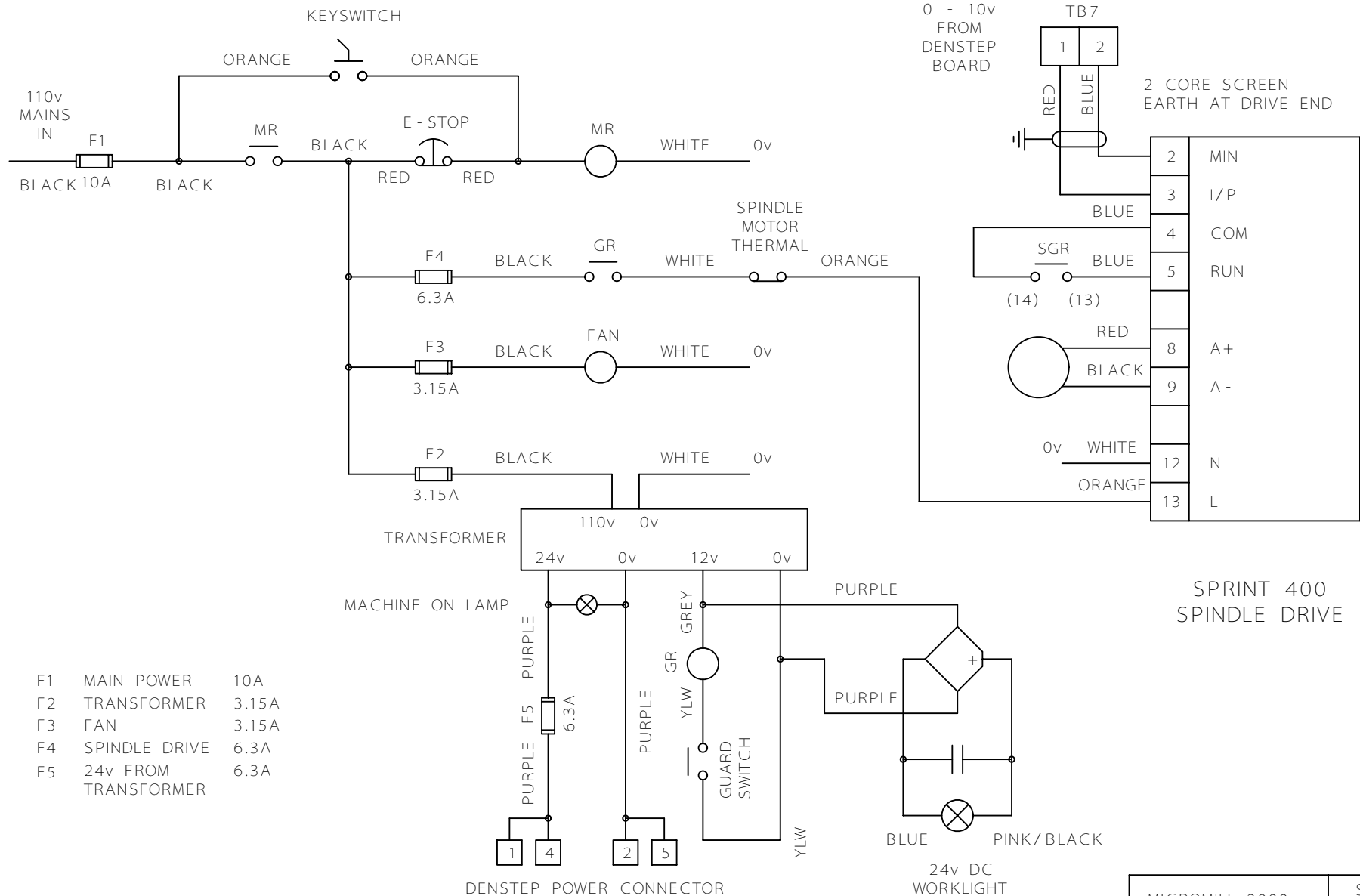


- | | | |
|----|----------------------|-------|
| F1 | MAIN POWER | 10A |
| F2 | TRANSFORMER | 3.15A |
| F3 | FAN | 3.15A |
| F4 | SPINDLE DRIVE | 6.3A |
| F5 | 24v FROM TRANSFORMER | 6.3A |

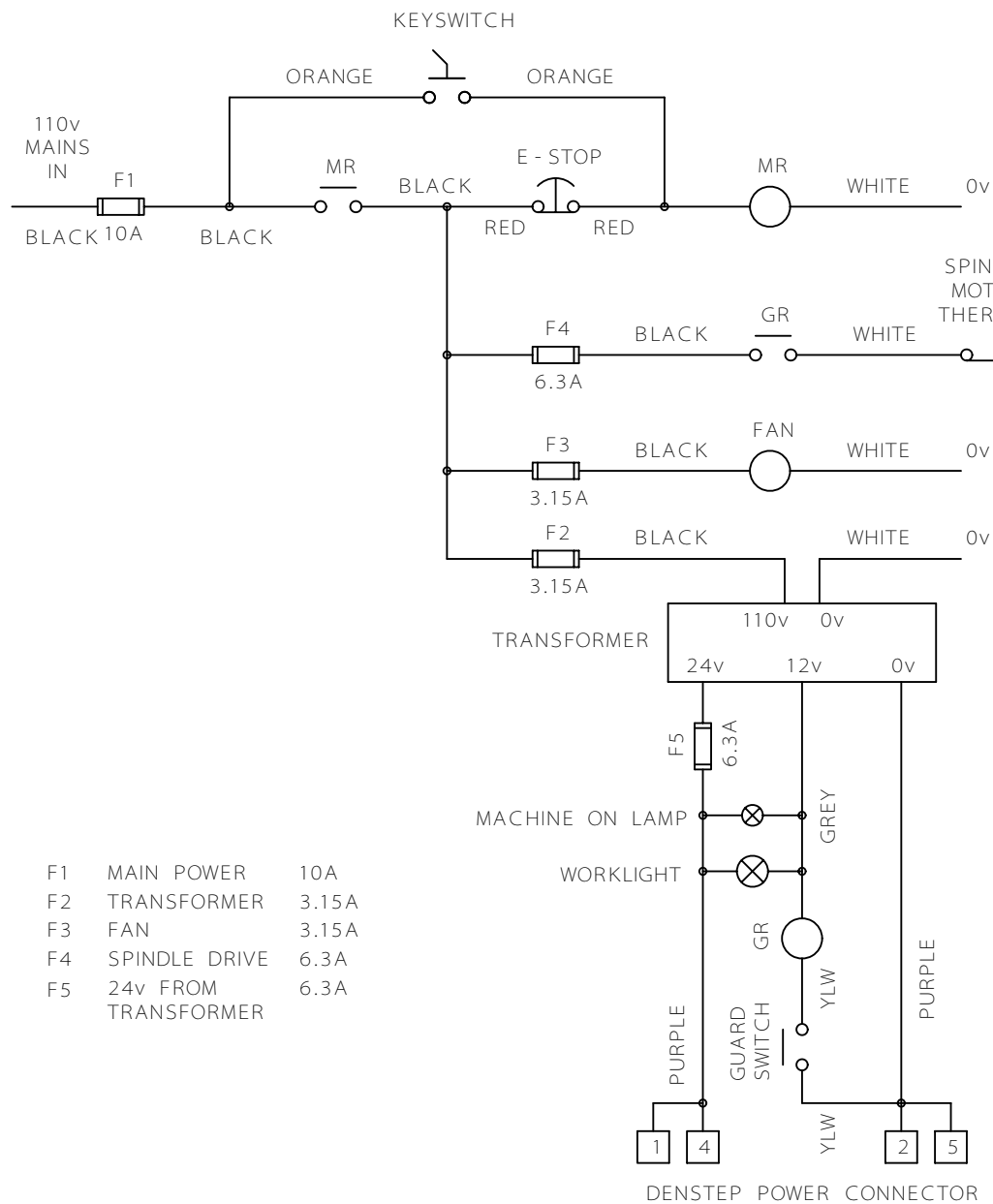
MICROMILL 2000
POWER SCHEMATIC
110v SUPPLY

SHEET 1
MICROMILL
DENSTEP



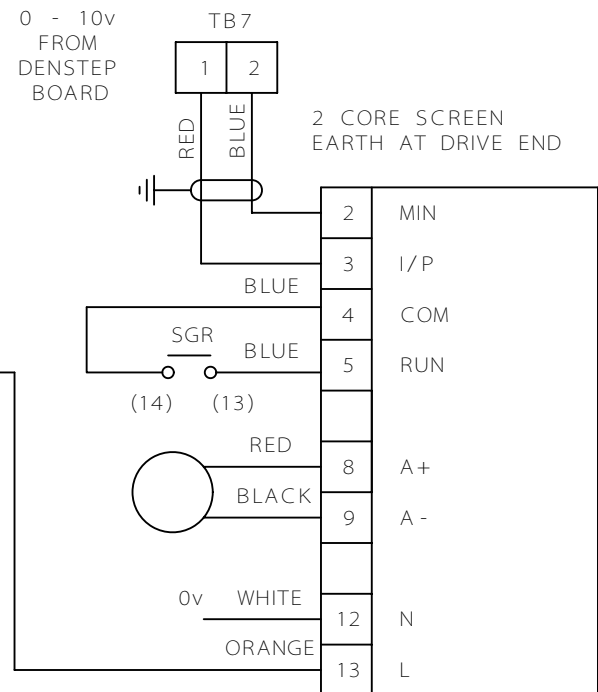
- | | | |
|----|----------------------|-------|
| F1 | MAIN POWER | 10A |
| F2 | TRANSFORMER | 3.15A |
| F3 | FAN | 3.15A |
| F4 | SPINDLE DRIVE | 6.3A |
| F5 | 24v FROM TRANSFORMER | 6.3A |

MICROMILL 2000 POWER SCHEMATIC 110v SUPPLY	SHEET 1
	MICROMILL
	DENSTEP



- | | | |
|----|----------------------|-------|
| F1 | MAIN POWER | 10A |
| F2 | TRANSFORMER | 3.15A |
| F3 | FAN | 3.15A |
| F4 | SPINDLE DRIVE | 6.3A |
| F5 | 24v FROM TRANSFORMER | 6.3A |

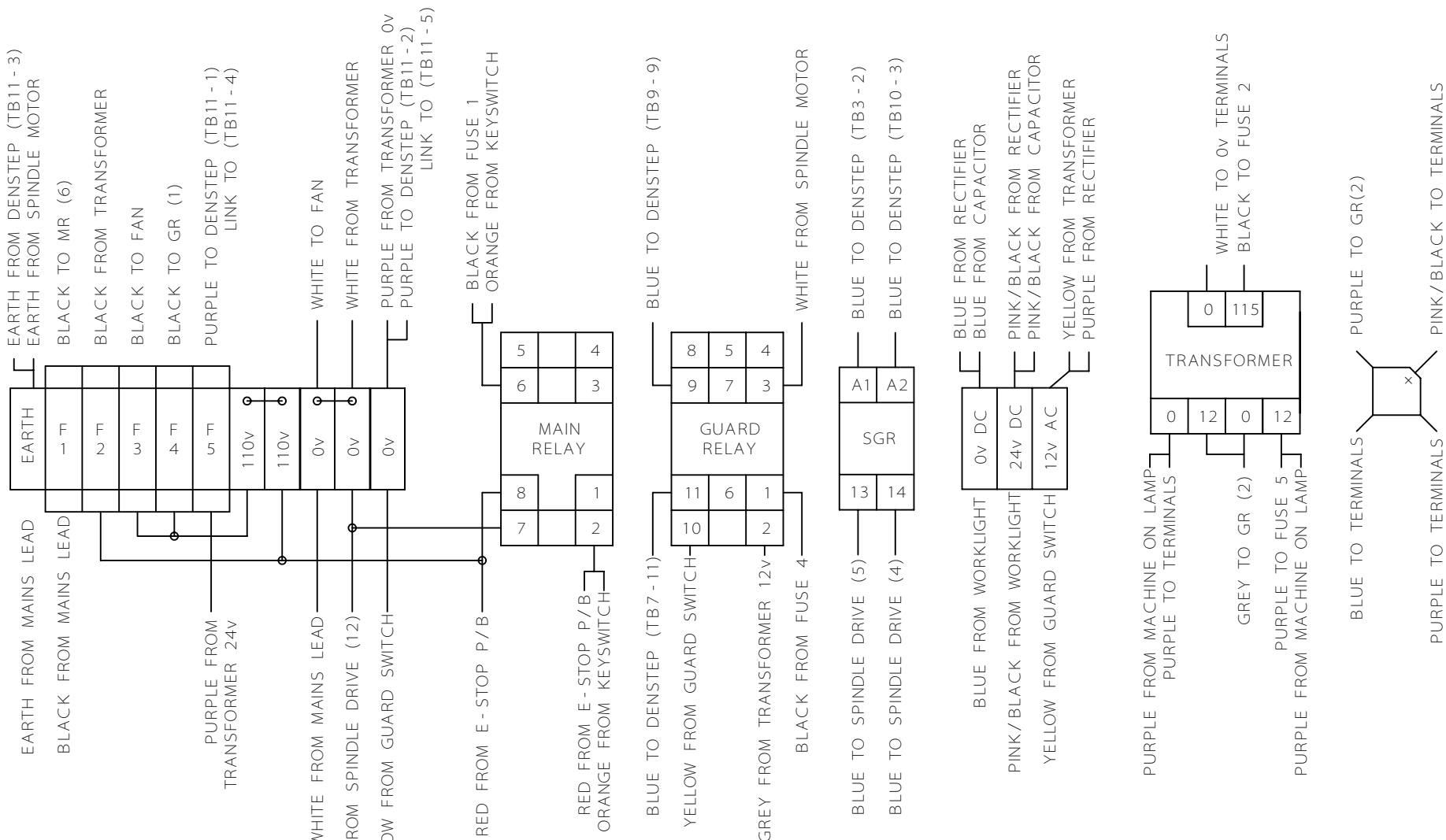
0 - 10v
FROM
DENSTEP
BOARD



SPRINT 400
SPINDLE DRIVE

MICROMILL 2000
POWER SCHEMATIC
110v SUPPLY

SHEET 1
MICROMILL
DENSTEP



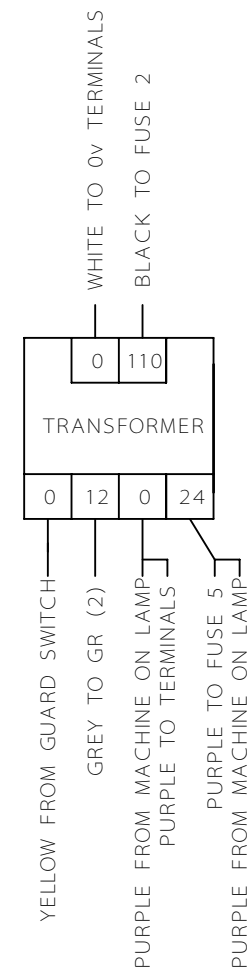
- F1 MAIN POWER 10A
 F2 TRANSFORMER 3.15A
 F3 FAN 3.15A
 F4 SPINDLE DRIVE 6.3A
 F5 24v FROM TRANSFORMER 6.3A

RELAY NAMES
 MR MAIN RELAY
 GR GUARD RELAY
 SGR SPINDLE GO RELAY

COIL - 110v AC
 COIL - 12v AC
 COIL - 12v DC

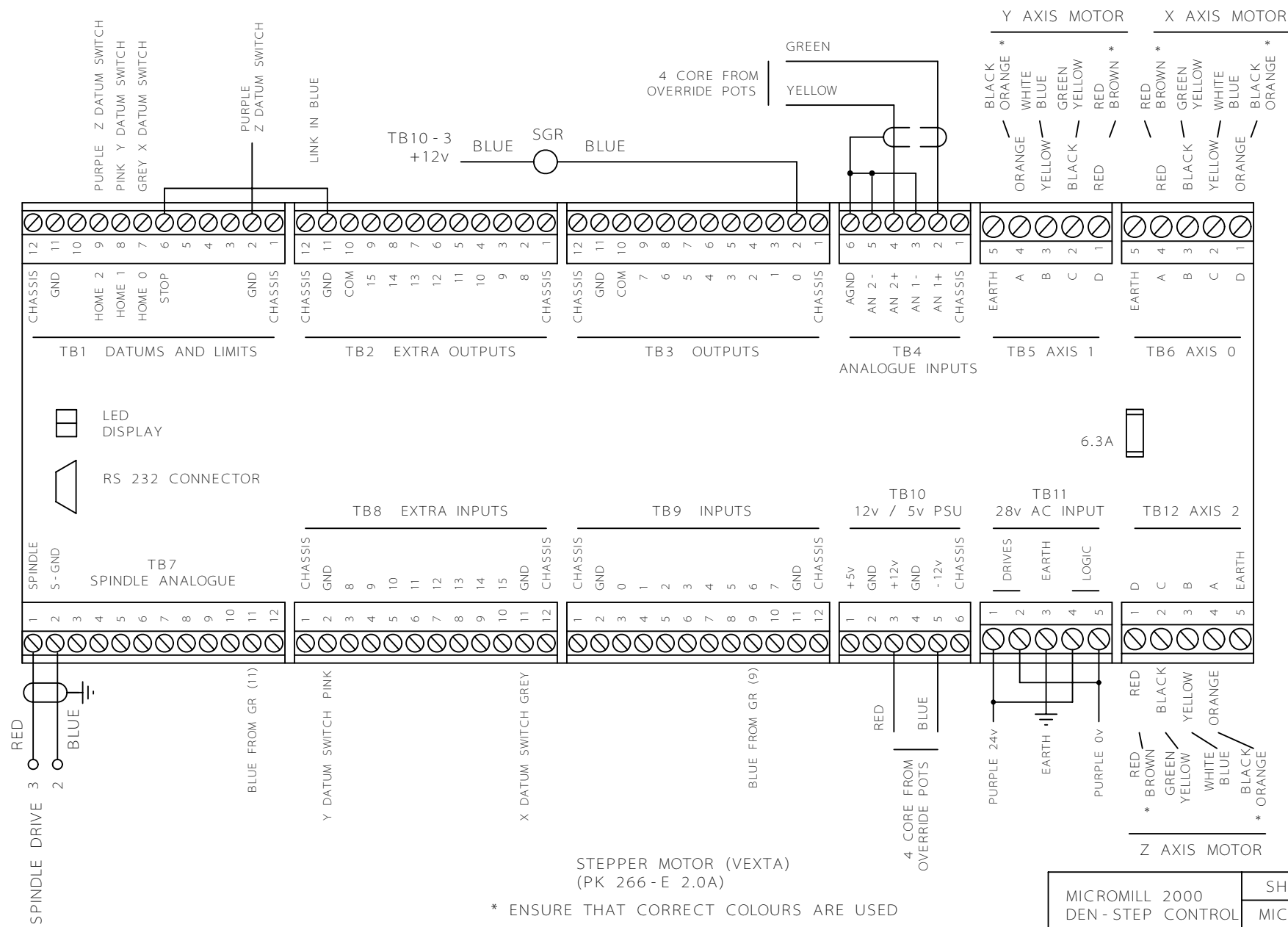
MICROMILL 2000
 RELAY AND FUSE
 WIRING

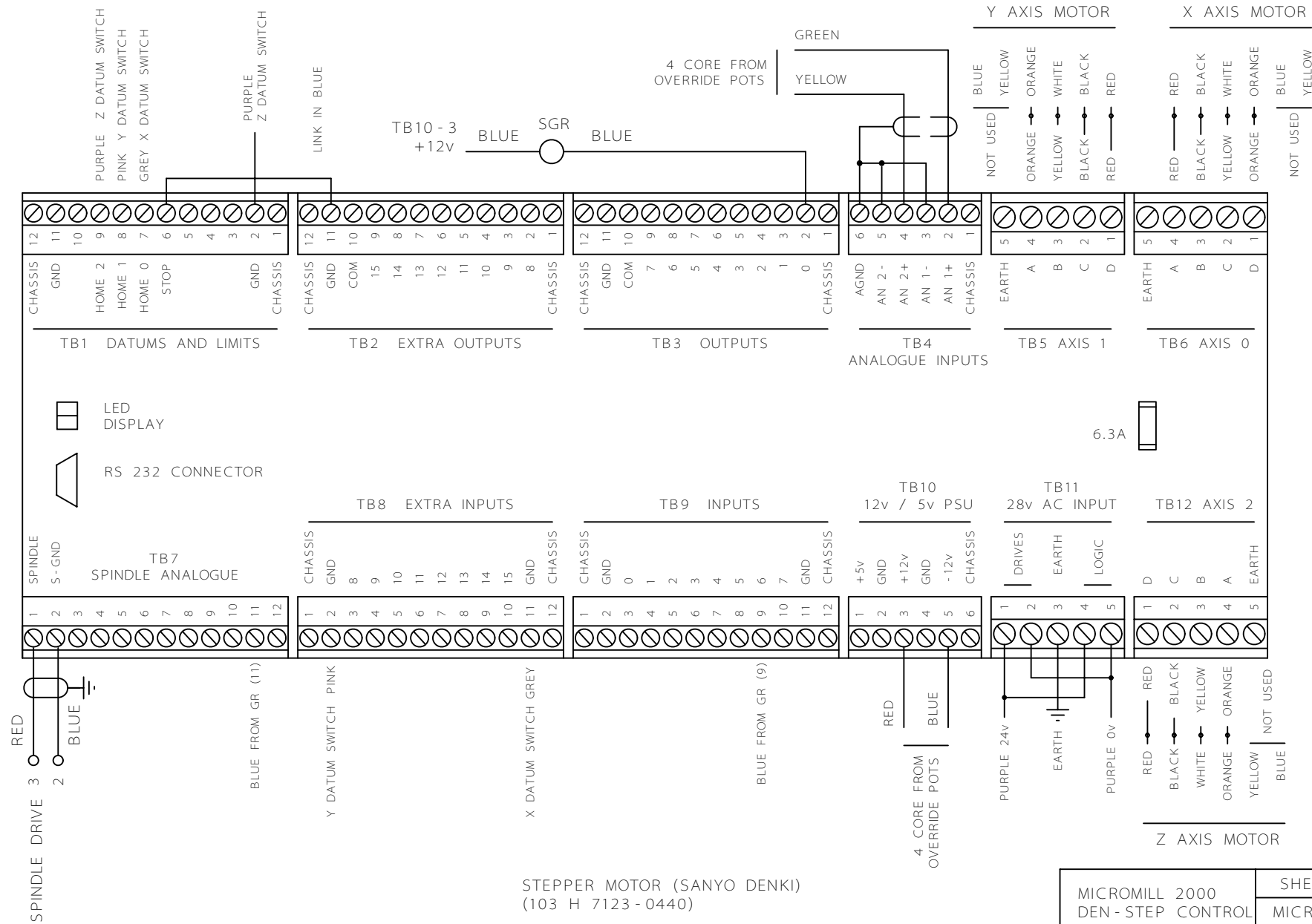
SHEET 2
 MICROMILL
 DENSTEP

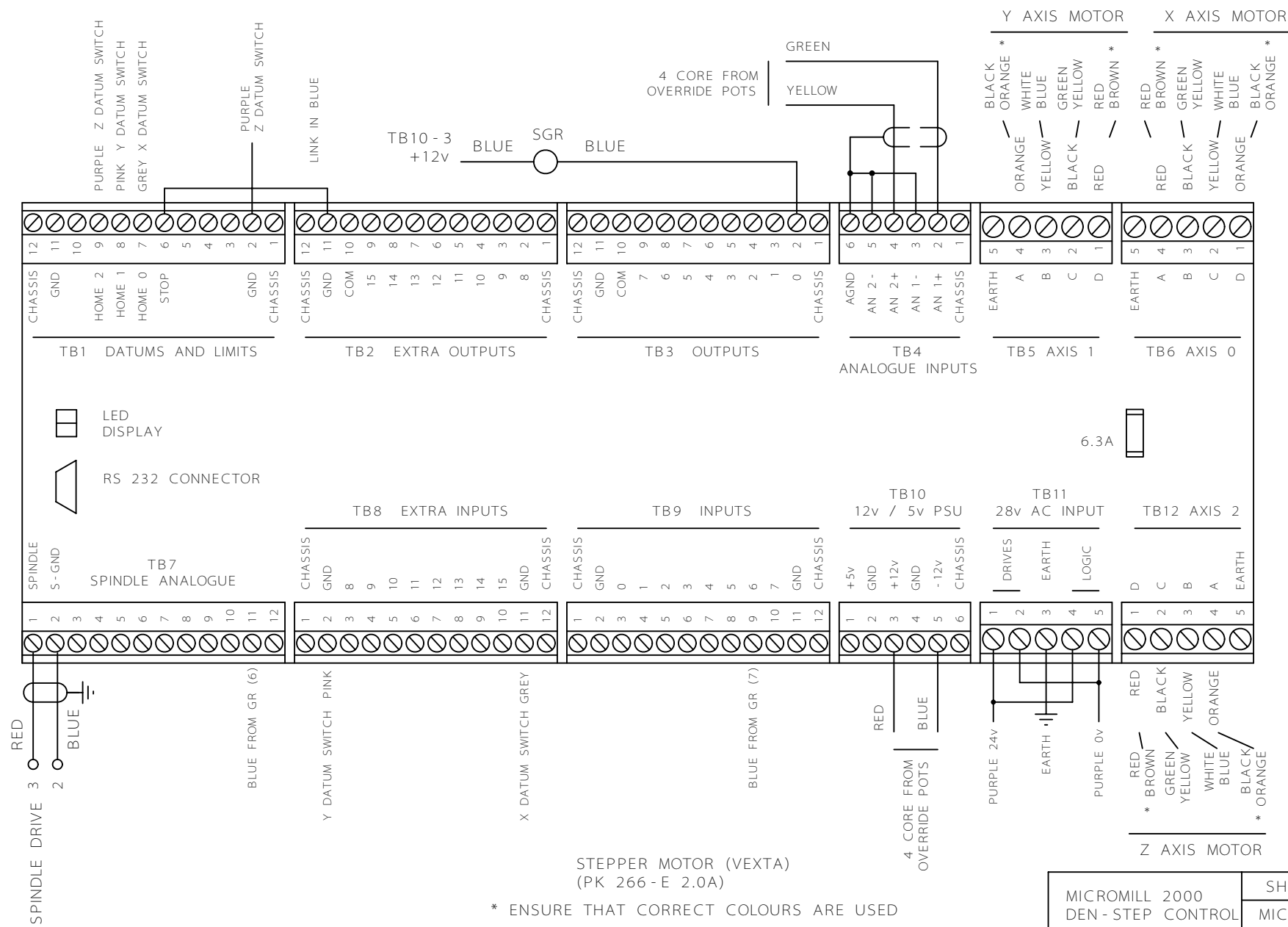


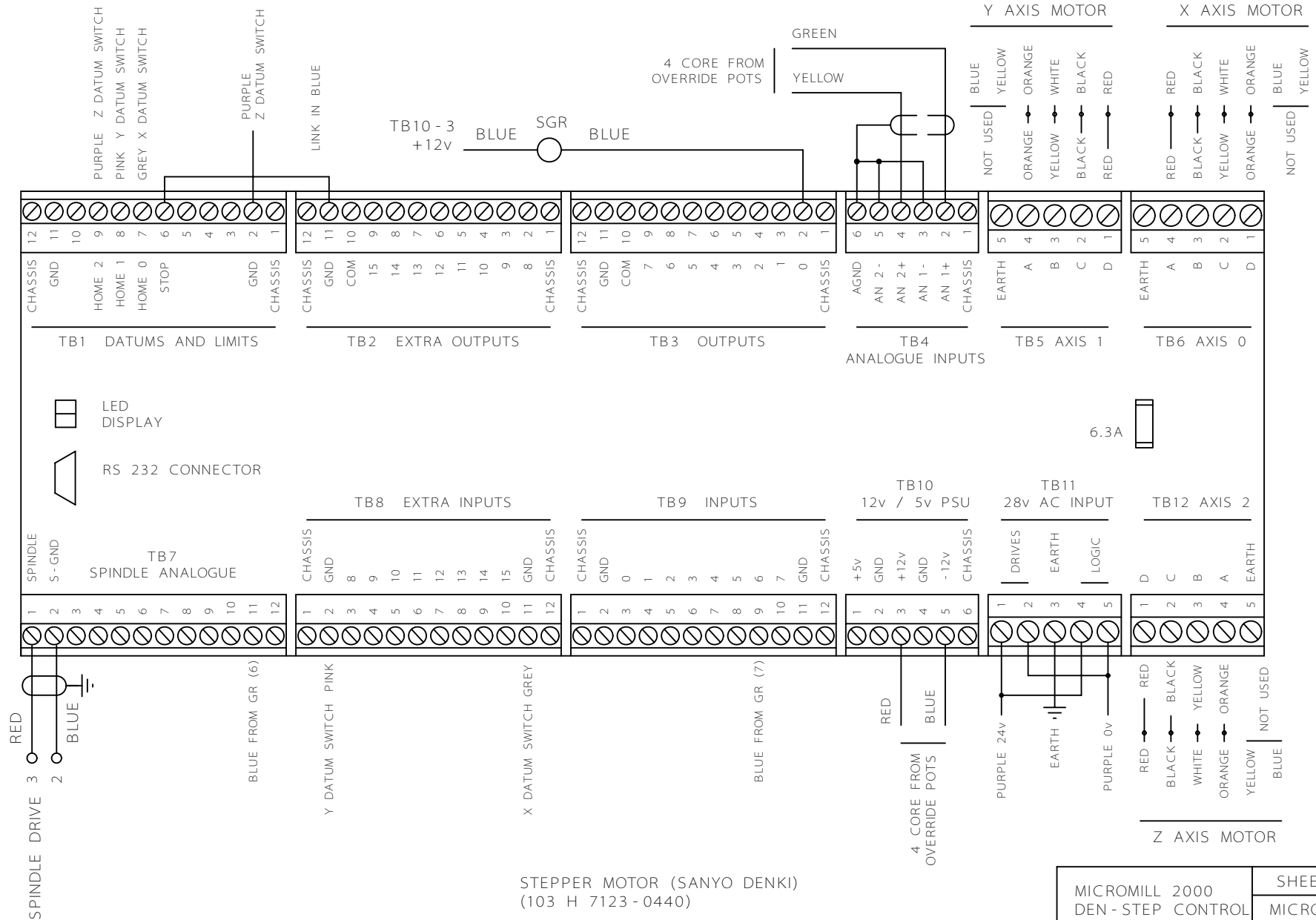
RELAY NAMES	
MR MAIN RELAY	COIL - 110v AC
GR GUARD RELAY	COIL - 12v AC
SGR SPINDLE GO RELAY	COIL - 12v DC

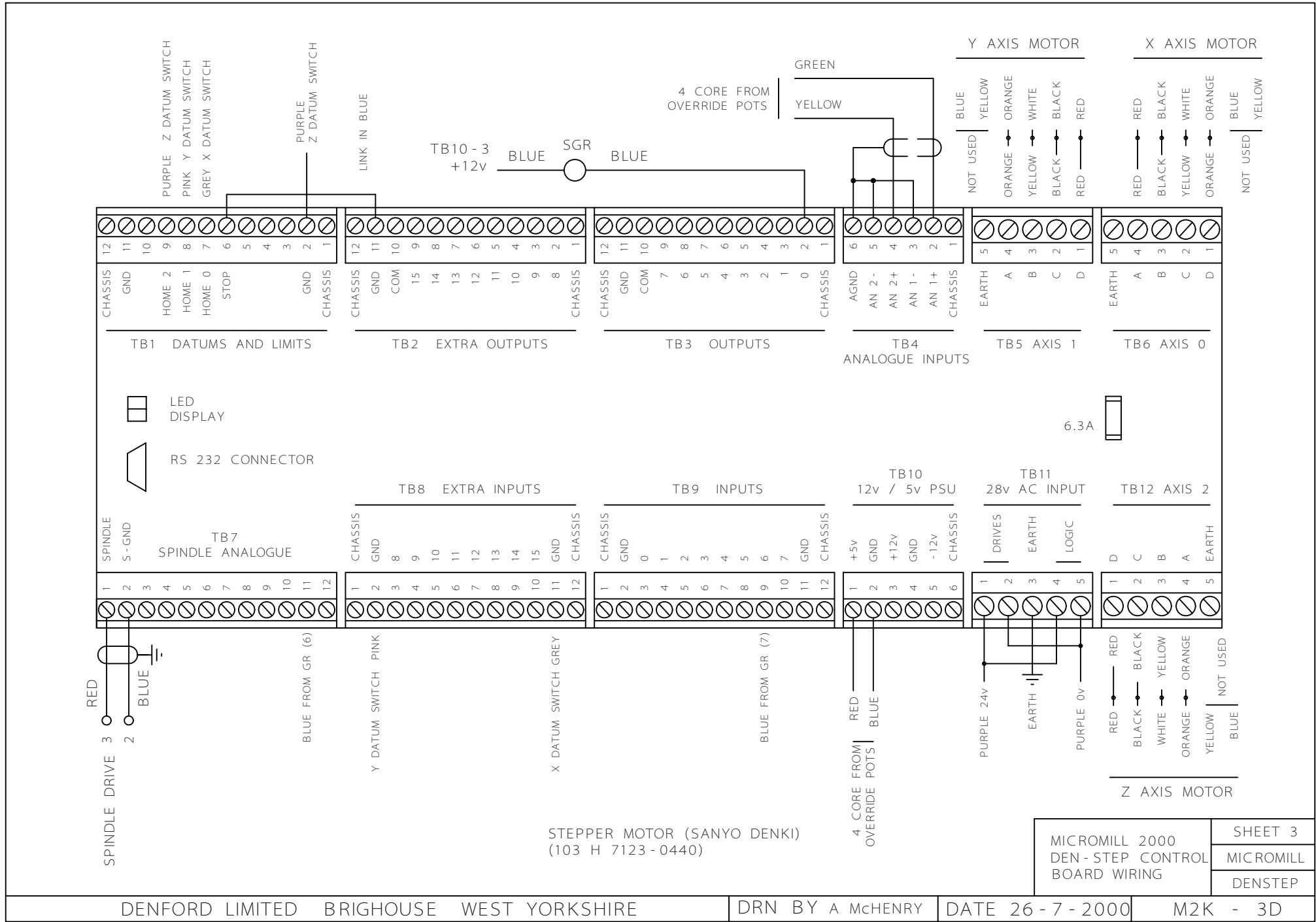
MICROMILL 2000 RELAY AND FUSE WIRING	SHEET 2
	MICROMILL
	DENSTEP

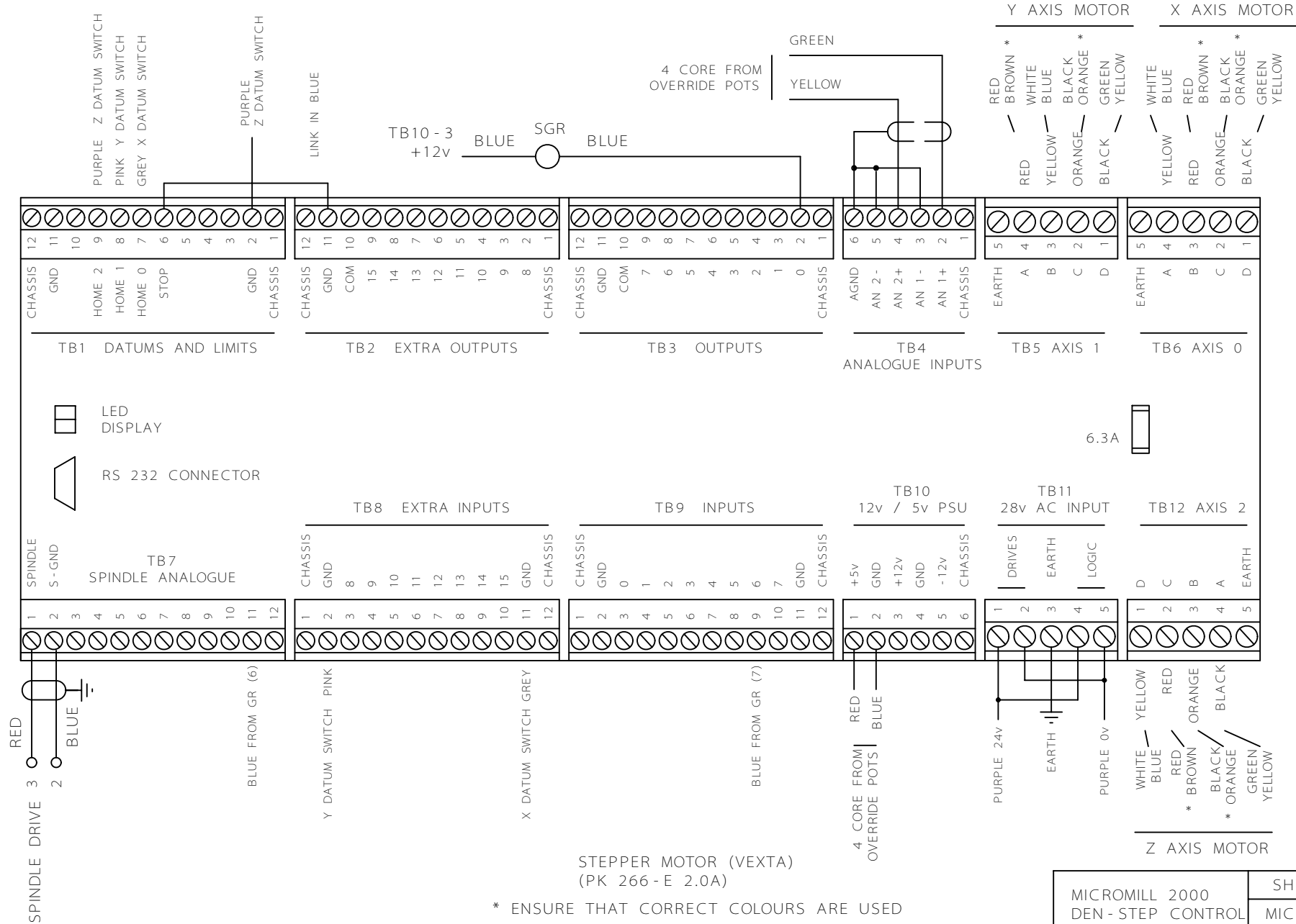


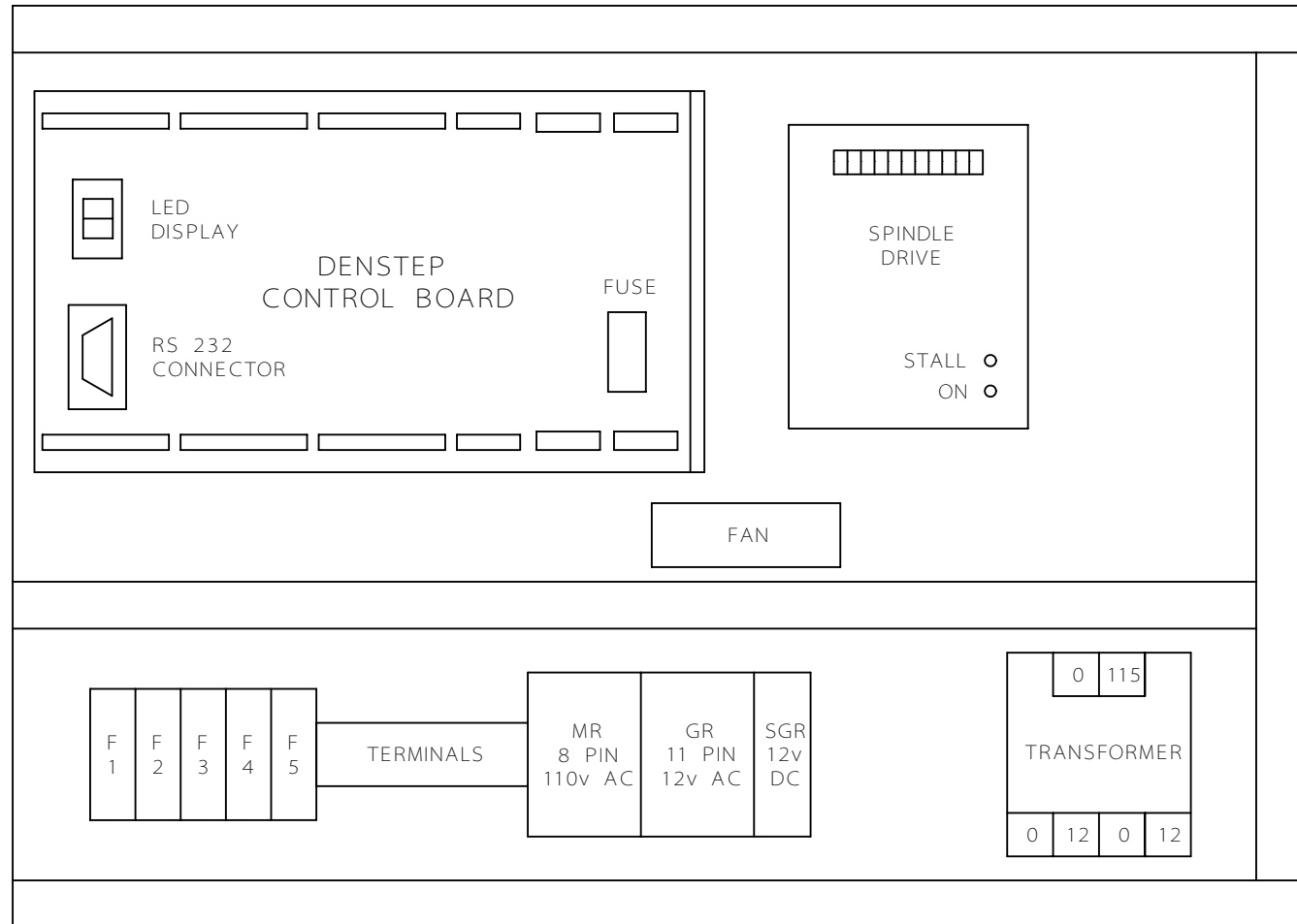
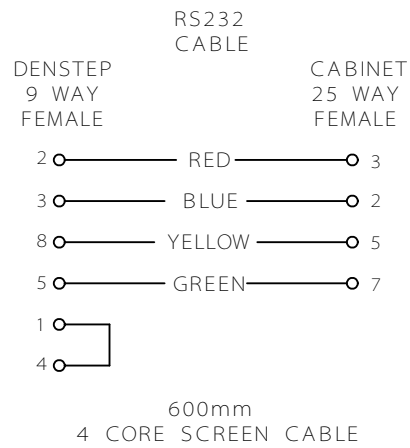








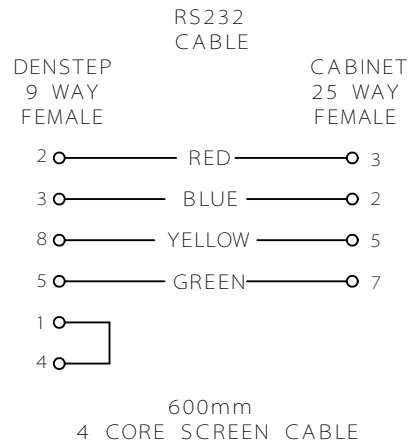
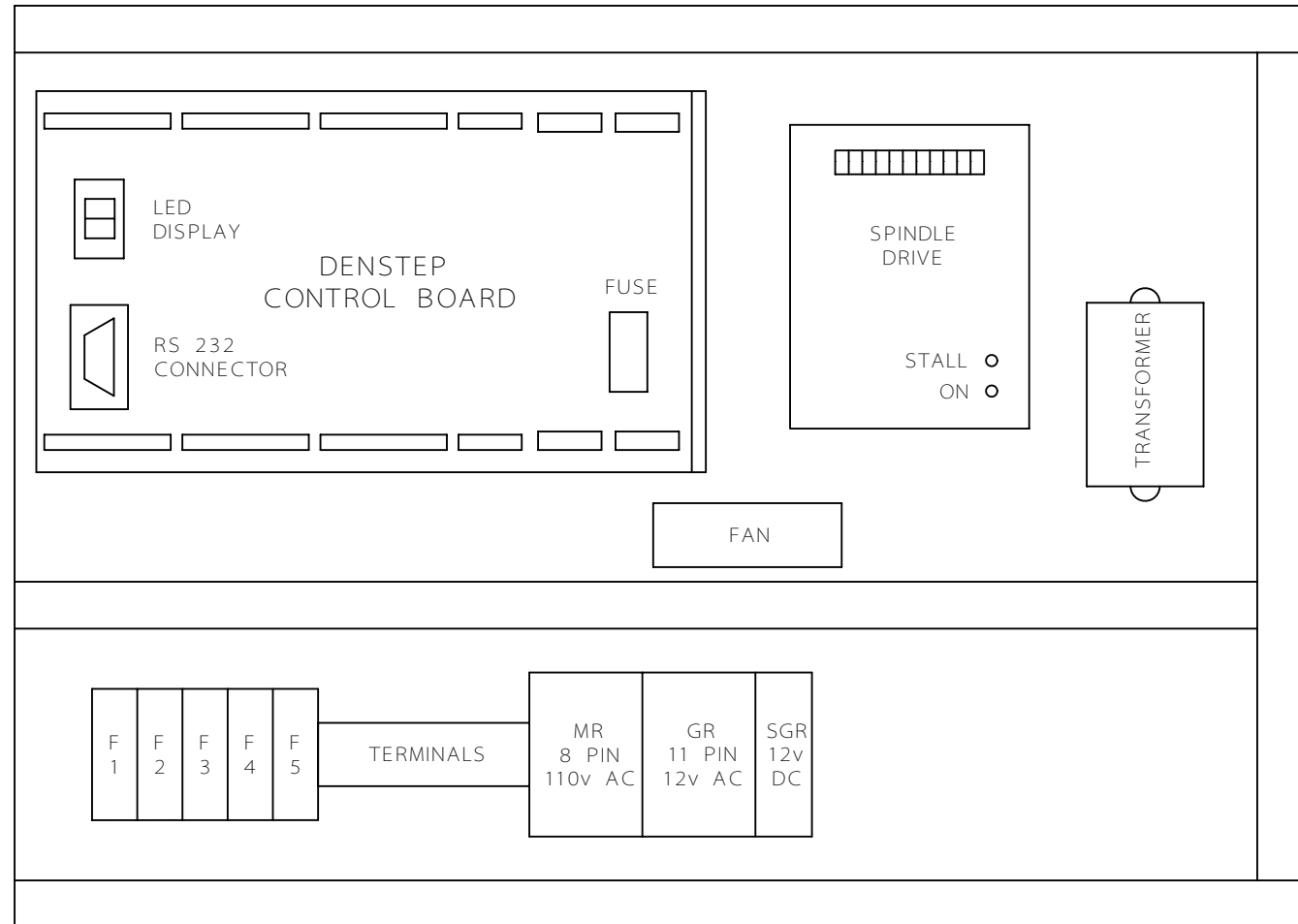




RELAY NAMES
 MR MAIN RELAY
 GR GUARD RELAY
 SGR SPINDLE GO RELAY

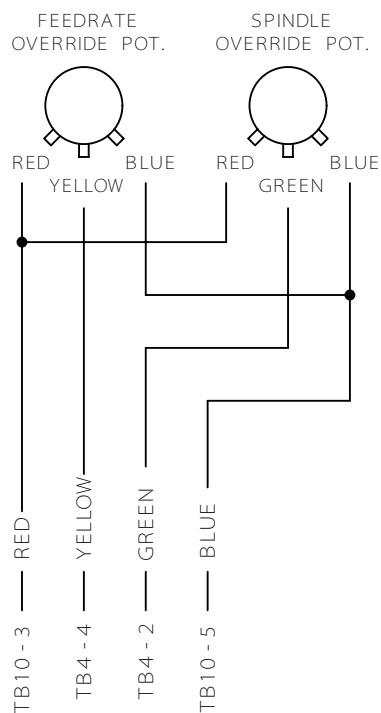
MICROMILL 2000
 PANEL LAYOUT
 AND RS232 CABLE

SHEET 4
 MICROMILL
 DENSTEP



RELAY NAMES
 MR MAIN RELAY
 GR GUARD RELAY
 SGR SPINDLE GO RELAY

MICROMILL 2000 PANEL LAYOUT AND RS232 CABLE	SHEET 4
	MICROMILL
	DENSTEP



KEY SWITCH



MACHINE ON
LAMP



EMERGENCY
STOP
SWITCH

FORK CRIMP
AT SWITCH END



SPINDLE MOTOR

RED	650mm	FERRULE
BLACK	650mm	FERRULE
ORANGE	1.4m	FERRULE
WHITE	1.1m	FORK CRIMP
GREEN	650mm	FERRULE

STEPPER MOTOR (VEXTA)
(PK 266 - E 2.0A)

RED	RED	
BROWN *		
WHITE	YELLOW	X AXIS 1.1m
BLUE		Y AXIS 1.75m
		Z AXIS 1.15m
BLACK		
ORANGE *	ORANGE	FERRULE
GREEN		
YELLOW	BLACK	

DATUM SWITCHES

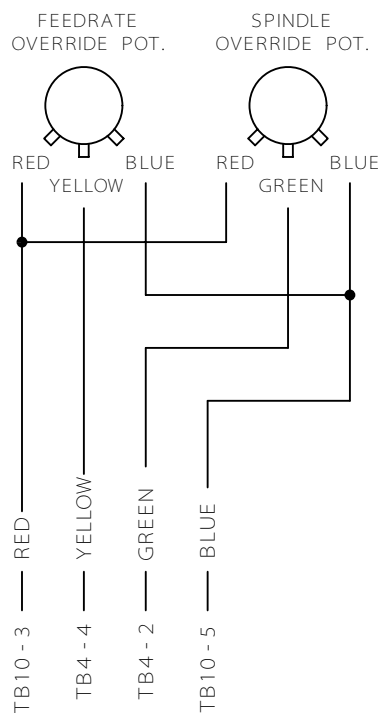
90° CRIMPS AT SWITCH END WITH
180mm BLACK HEATSHRINK
FERRULES AT PANEL END

X AXIS	1.1m	GREY
Y AXIS	1.9m	PINK
Z AXIS	1m	PURPLE

* ENSURE THAT CORRECT COLOURS ARE USED

MICROMILL 2000
SWITCH AND MOTOR
WIRING DETAILS

SHEET 5
MICROMILL
DENSTEP



KEY SWITCH



MACHINE ON
LAMP



EMERGENCY
STOP
SWITCH

FORK CRIMP
AT SWITCH END



SPINDLE MOTOR

RED	650mm	FERRULE
BLACK	650mm	FERRULE
ORANGE	1.4m	FERRULE
WHITE	1.1m	FORK CRIMP
GREEN	650mm	FERRULE

STEPPER MOTOR (SANYO DENKI)
(103 H 7123 - 0440)

RED	RED
BLACK	BLACK
ORANGE	ORANGE
WHITE	YELLOW
BLUE	NOT CONNECTED
YELLOW	
X AXIS	1.1m FERRULE
Y AXIS	1.75m
Z AXIS	1.15m

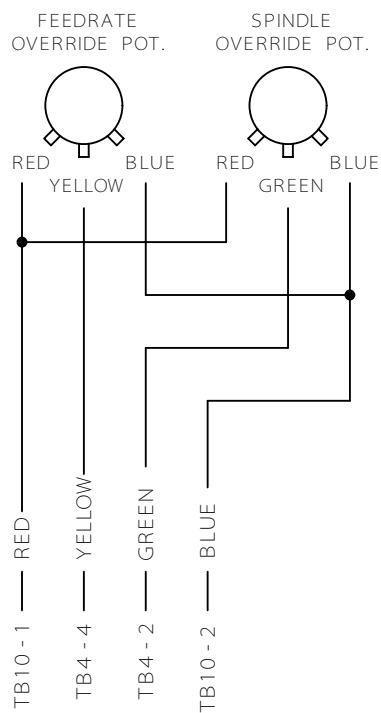
DATUM SWITCHES

90° CRIMPS AT SWITCH END WITH
180mm BLACK HEATSHRINK
FERRULES AT PANEL END

X AXIS	1.1m	GREY
Y AXIS	1.9m	PINK
Z AXIS	1m	PURPLE

MICROMILL 2000
SWITCH AND MOTOR
WIRING DETAILS

SHEET 5
MICROMILL
DENSTEP



KEY SWITCH



MACHINE ON
LAMP



EMERGENCY
STOP
SWITCH

FORK CRIMP
AT SWITCH END



SPINDLE MOTOR

RED	650mm	FERRULE
BLACK	650mm	FERRULE
ORANGE	1.4m	FERRULE
WHITE	1.1m	FORK CRIMP
GREEN	650mm	FERRULE

STEPPER MOTOR (VEXTA)
(PK 266 - E 2.0A)

RED	RED	
BROWN *		
WHITE	YELLOW	X AXIS 1.1m
BLUE		Y AXIS 1.75m
		Z AXIS 1.15m
BLACK		
ORANGE *	ORANGE	FERRULE
GREEN		
YELLOW	BLACK	

DATUM SWITCHES

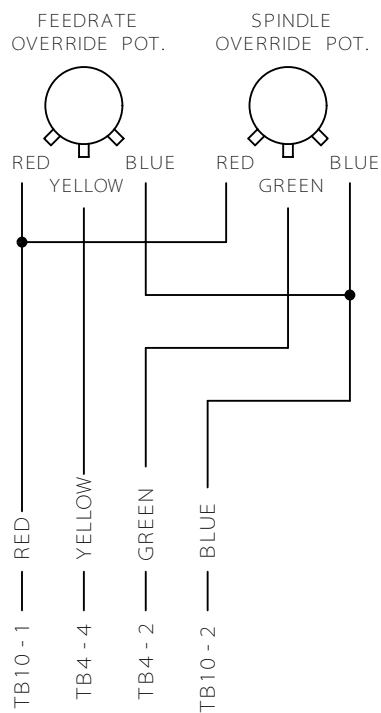
90° CRIMPS AT SWITCH END WITH
180mm BLACK HEATSHRINK
FERRULES AT PANEL END

X AXIS	1.1m	GREY
Y AXIS	1.9m	PINK
Z AXIS	1m	PURPLE

* ENSURE THAT CORRECT COLOURS ARE USED

MICROMILL 2000
SWITCH AND MOTOR
WIRING DETAILS

SHEET 5
MICROMILL
DENSTEP



KEY SWITCH



MACHINE ON
LAMP



EMERGENCY
STOP
SWITCH

FORK CRIMP
AT SWITCH END



SPINDLE MOTOR

RED	650mm	FERRULE
BLACK	650mm	FERRULE
ORANGE	1.4m	FERRULE
WHITE	1.1m	FORK CRIMP
GREEN	650mm	FERRULE

STEPPER MOTOR (SANYO DENKI) (103 H 7123 - 0440)

RED	RED
BLACK	BLACK
ORANGE	ORANGE
WHITE	YELLOW
BLUE	NOT CONNECTED
YELLOW	
X AXIS	1.1m FERRULE
Y AXIS	1.75m
Z AXIS	1.15m

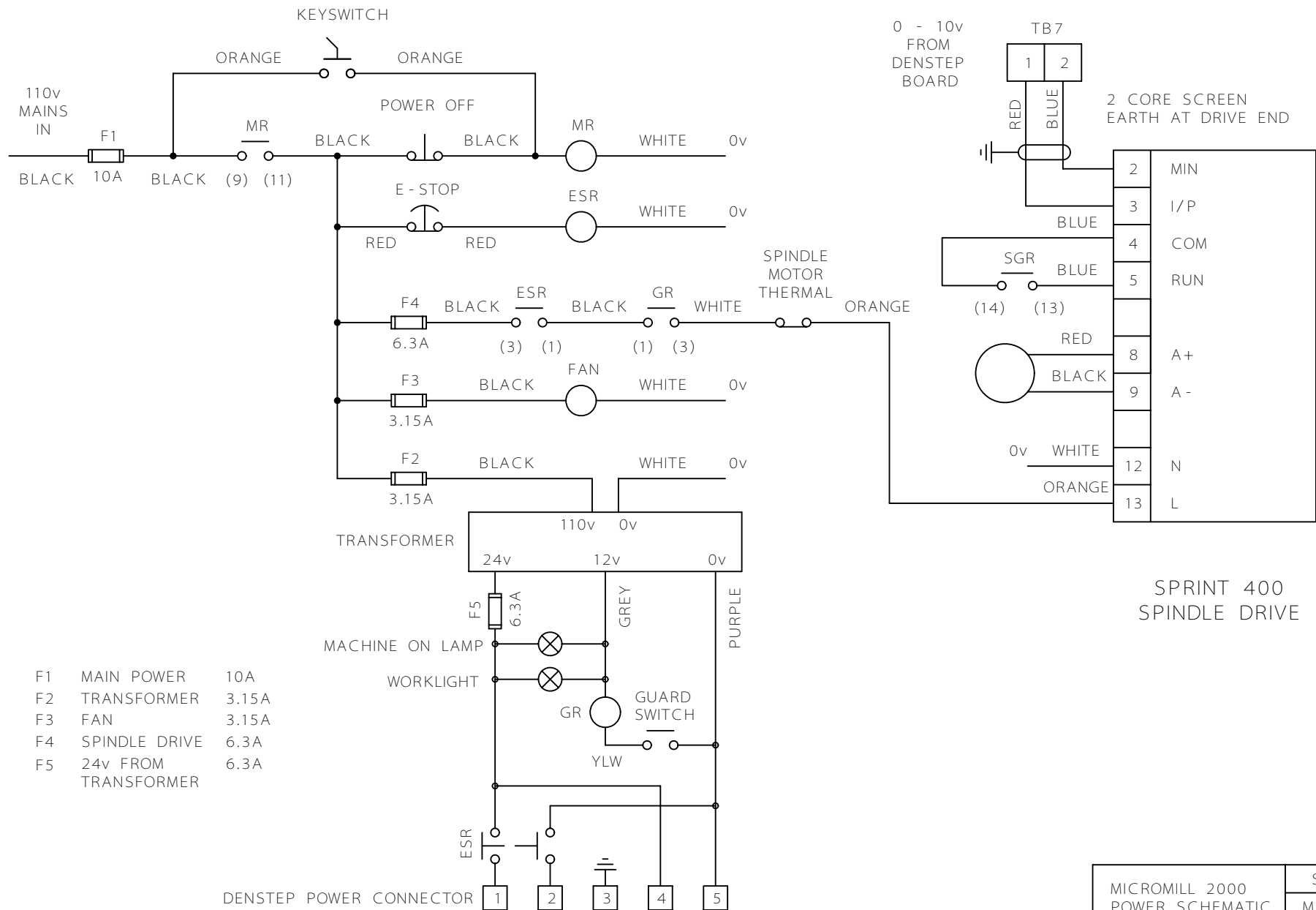
DATUM SWITCHES

90° CRIMPS AT SWITCH END WITH
180mm BLACK HEATSHRINK
FERRULES AT PANEL END

X AXIS	1.1m	GREY
Y AXIS	1.9m	PINK
Z AXIS	1m	PURPLE

MICROMILL 2000
SWITCH AND MOTOR
WIRING DETAILS

SHEET 5
MICROMILL
DENSTEP



MICROMILL 2000
POWER SCHEMATIC
110v SUPPLY

SHEET 1
MICROMILL
DENSTEP