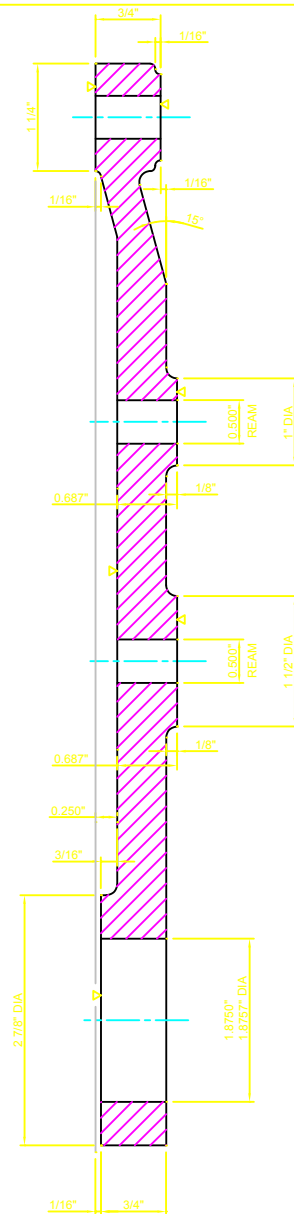


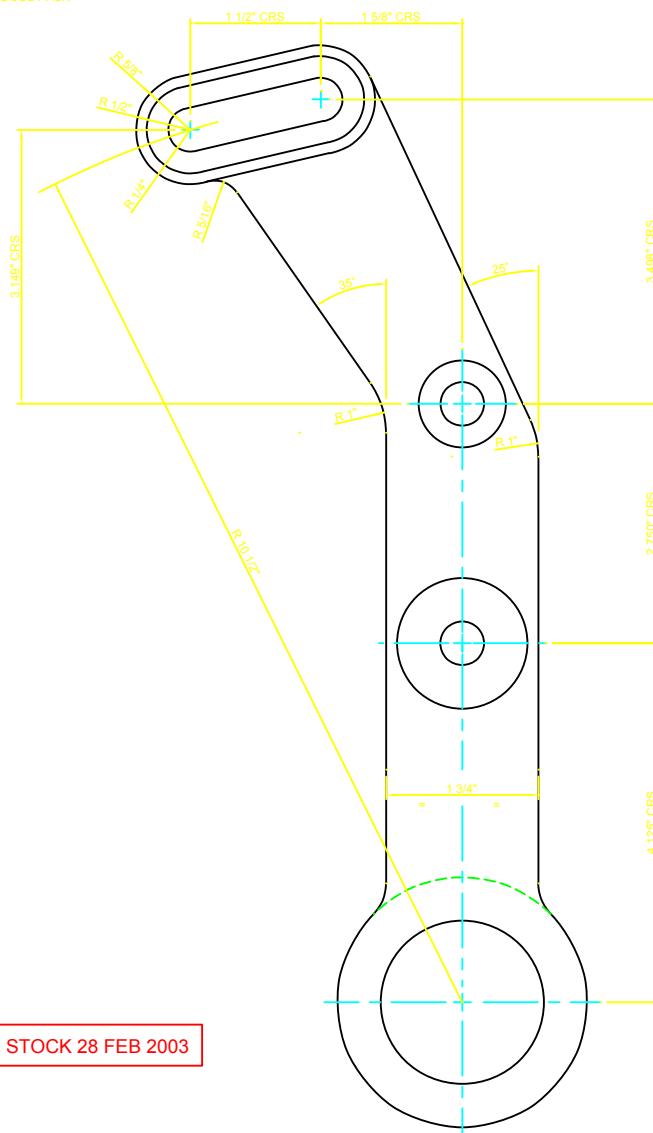
DIMENSIONS PRIOR TO MODIFICATION: 2372/77 (MAY 1977)  
THESE MODELS HAVE THE GEAR SPINDLES RETAINED  
WITH A 7/16" BSW NUT & WASHER



DIMENSIONS AFTER MODIFICATION: 2372/77 (MAY 1977)  
THESE MODELS HAVE THE GEAR SPINDLE RETAINED  
WITH AN M5 C/SUNK SCREW & RETAINING PLATE: ML100/117

4 IN STOCK 28 FEB 2003


IF IN DOUBT ASK



BREAK SHARP EDGES

DENFORD  
COMPUTERISED MACHINES AND SYSTEMS

UNLESS STATED OTHERWISE  
ALL DIMENSIONS ARE IN mm  
LIMITS ON DIMENSIONS: ANGULAR  $\pm 0.5^\circ$   
LINEAR / DIAMETRAL  $\pm 0.01^\circ$   
MACHINE SURFACES  
ALL THREADS TO BE CLASS 6H / 6g  
UNSPECIFIED GEOMETRIC TOLERANCES  
TO LIE WITHIN THE TOLERANCE ZONE.

	1165/65 22.4.65 MS 1765/70 10.6.70 IV 2372/77 3.5.77 IV			
	ORIGINAL ISSUE			1
N°	ALTERATION			ISSUE
DRAWN	A S CLARK	CHECKED	 3 <sup>RD</sup>	
DATE	8.1.1962			
SCALE	1:1			
MATERIAL	CAST IRON			
TITLE	5" GEARBOX LATHE - QUADRANT			
PART N°	ML115/903			